

ThinkHub®

IDEATE. COLLABORATE. INNOVATE.

ThinkHub consolidates the moving pieces of teamwork – devices, applications, people, ideas, and content – to revolutionize your ability to achieve great work, together. Whether you're giving a presentation, running a brainstorming session, strategizing, and more, ThinkHub wireless collaboration software allows you to engage with your peers and cultivate exceptional work in real-time, while saving time.



INNOVATION LAB



EXECUTIVE BOARDROOM



HUDDLE SPACE



MEETING ROOM

THINKHUB EMPOWERS TEAMS TO:

- Improve efficiency and productivity
- Visualize mass amounts of content
- Connect with remote teams in real-time sessions
- Share notes and content from anywhere, regardless of location or network
- Save time with meeting prep and follow-ups - save, share, and resume sessions at any time
- Leverage the programs and devices already being used - ThinkHub is totally platform agnostic
- Engage off-site participants with integrated video conferencing options for Zoom, MS Teams, Webex, BlueJeans, and more...
- Deliver more powerful presentations

CORE USE CASES

- › Meeting Rooms
- › Executive Boardrooms
- › Huddle Spaces
- › Innovation Labs
- › Executive Briefing Centers
- › Customer Experience Centers
- › Interactive Auditoriums
- › Corporate Training Rooms
- › Command and Control Centers

t1v.com/ThinkHub

T1V EXPERIENCE
INTERACTIVE

sales@t1v.com

KEY FEATURES

1 CANVAS

The ThinkHub Canvas is the digital backdrop for your ThinkHub sessions, and can expand up to 20 times the surface area of the physical touchscreen. Use touch gestures to navigate the Canvas. Enjoy the ability to write directly on the Canvas, and pinch-zoom to visualize process flows or connect different ideas in your session.

2 CANVAS KEY

The Canvas Key is located in the upper left corner of your ThinkHub Canvas. In addition to using the Canvas Key as your visual aid, you can tap directly on the Key to quickly navigate to different areas of the Canvas.

3 MENU

Tap the menu icon or tap and hold anywhere on the Canvas to open your user tools. From here you can open any of our apps (Note, Sketch, Web Browser), access media, draw directly on the Canvas, organize content, show/hide content labels, undo actions on the Canvas, and save/open/email/print your ThinkHub sessions.

4 WEB BROWSER

Tap or drag and drop the Web Browser onto the Canvas to access, move, pinch-zoom, and annotate web-based content.

5 NOTES

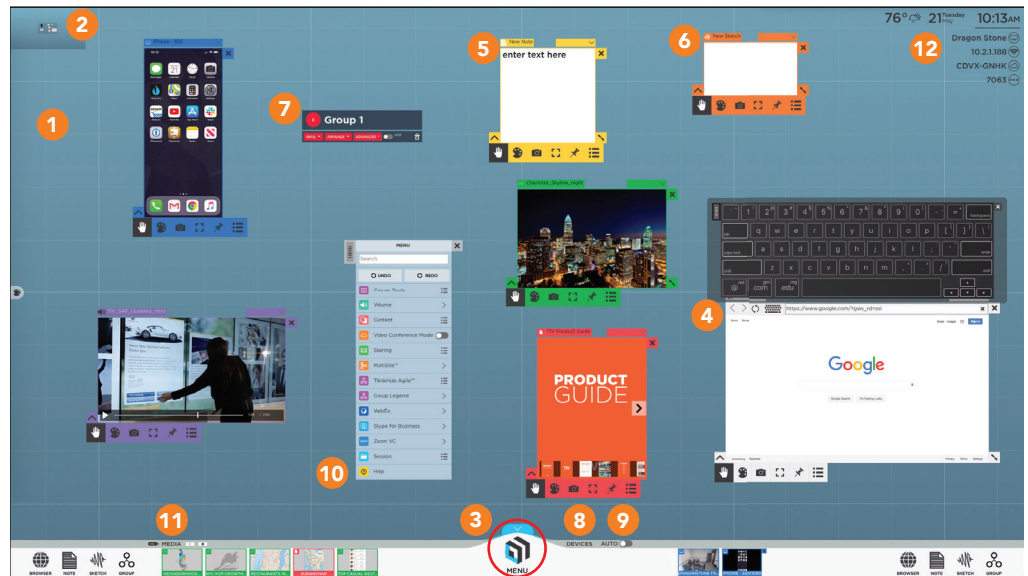
Select different text and background colors. Use Notes to jot down quick ideas. Access Notes anytime from the App section of the Canvas Tray, or via the menu.

6 SKETCH

Open a Sketch to create a quick drawing on the ThinkHub Canvas. Use the built-in annotation tools to select different pen weights, colors, take snapshots, and more. Access Sketches anytime from the App section of the Canvas Tray or via the menu.

7 GROUPS

ThinkHub Groups are an effective way to manage and organize Canvas content, and help participants to visualize and categorize content in large team planning and brainstorming sessions. Groups can contain any content shared to the Canvas. Once a group is created, users have the ability to assign a theme, and can control the way the group content is displayed. Participants can assign notes they are sending to the Canvas to Groups from their AirConnect App.



8 DEVICES

All connected devices will appear in the device section of the Canvas Tray. Each device will display as a preview thumbnail until you tap or drag the thumbnail to the Canvas. If you have integrated hardline inputs or IP cameras with your ThinkHub, these feeds will also appear in your devices. You can also access all devices under the devices tab in the menu.

9 AUTOPRESENT

Toggle 'Auto' on/off to automatically display device screens to the Canvas when connected. When AutoPresent is on, anyone who connects their device to the Canvas will automatically be displayed in a large and centered device window.

10 THINKHUB HELP

Anytime you need a refresher on your ThinkHub tools, you can access ThinkHub Help by tapping the question mark icon located at the bottom of the menu.

11 MEDIA

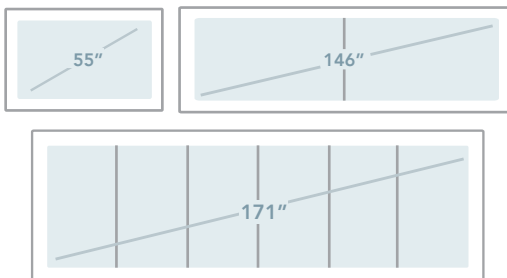
All content files live within the media section of the Canvas tray - this includes images, videos, and PDFs. Load content on the fly via USB, or integrate with your organization's file-based system (this can be configured at setup). Simply tap or drag file thumbnails to the Canvas to view the content. You can also access media under the media tab in the menu.

12 TIV AIRCONNECT APP

TIV AirConnect enables you to connect any laptop or mobile device wirelessly to the ThinkHub Canvas. TIV AirConnect supports macOS, iOS, Linux, Android, and Windows. Once you have installed AirConnect on your device, you will be prompted for your AirConnect Key or IP Address. You can reference the top right corner of the ThinkHub Canvas for this information. **Download AirConnect at t1v.com/AirConnect.**

TOTAL FLEXIBILITY

Whether you're working with a single panel or multipanel video wall, or want to run ThinkHub on an interactive table, ThinkHub solutions are highly flexible and can be seamlessly integrated with your space. Enjoy the option to work with T1V all-in-one solutions, partner bundles, or purchase the standalone ThinkHub device to run on the qualified touchscreen technology of your choice.



ASK YOUR T1V REP ABOUT ENHANCING YOUR THINKHUB EXPERIENCE WITH OUR ADD-ON MODULES:

- › ThinkHub MultiSite™
- › ThinkHub xCanvas™
- › ThinkHub Agile™
- › ThinkHub Virtual AV Matrix™
- › ThinkHub Cloud Access™
- › ThinkHub Dock™
- › ThinkHub VC™
- › ...and more coming soon