

T1V

CUSTOMER CASE STUDIES

T1V SOFTWARE IN ACTION



Des Moines University

T1V STORY FOSTERS CONNECTIONS IN THE MAIN LOBBY OF THE UNIVERSITY

DESCRIPTION

The Edge of Advancement building embodies Des Moines University's vision for educating highly competent, compassionate health care professionals. This "front door to campus" hums with activity in adaptable learning studios and collaborative spaces for classes, small groups and community events. Open learning commons on the first and second floors are designed to support academic study, foster discussions, and connect faculty and students across programs.

Upon entering the Edge of Advancement building — immediately experience DMU's interactive wall powered by T1V Story. Walk the wall to interact with the University's history and great milestones.

SOLUTION

- T1V Story branded storytelling software drives (2) small interactive touch displays that outputs content to (2) 2x4 non-touch LCD walls
- Interactive Showcase honors past and present alumni, donors, and more with interactive biographies and galleries



Ellison Institute

Strengthening collaboration in leading cancer research facility

CHALLENGE

The Ellison Institute draws collaborators from across conventional health and wellness fields, as well as from a broad range of other disciplines such as physics, biology, math and engineering to study cancer and potential ways to prevent, detect and treat the disease. This new, state-of-the-art facility needed a way to combine leaders from their respective fields to collaborate seamlessly across different disciplines and locations.

SOLUTION

Some of the greatest minds in medicine now come together using T1V's comprehensive ThinkHub collaboration platform, including:

- 25 ThinkHub MultiSite systems
- 3 Virtual ThinkHub accounts

[WATCH THE VIDEO](#)



Ellison Institute

Visualization Lab
strengthens
collaboration in
leading cancer
research facility





Georgia Tech

College of Computing

BUILDING COMMUNITY

CHALLENGE

Georgia Tech College of Computing wanted to create a space to celebrate its rich community of past alumni, current students, and the future students who have yet to arrive.

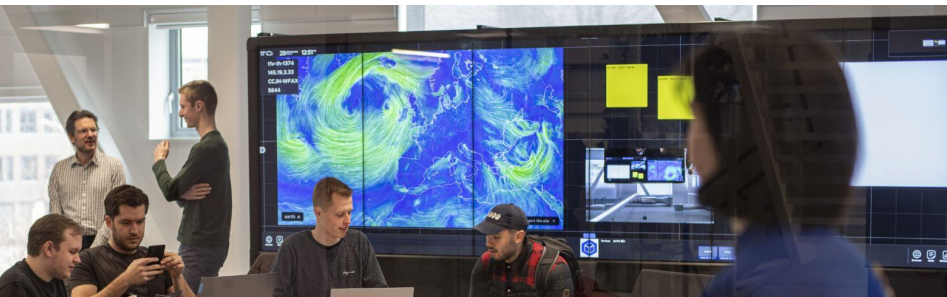
SOLUTION

An interactive wall is running T1V Story software, which provides the College with interactive apps to visually tell their story

- **Hall of Fame** | highlights individuals who have contributed to the College's success across decades of history.
- **Rising Stars** | showcases the accomplishments of young alumni
- **Interactive Timeline** | provides a complete timeline and history of the school - and weaving together key milestones
- **Schools** | educates visitors (or existing students) about the current schools with the College

[WATCH THE VIDEO](#)





JRCZ Data Science Lab HZ University of Applied Sciences

THINKHUB CREATES A COLLABORATIVE, NEXT GEN EDUCATION EXPERIENCE FOR DATA EXPLORATION CHALLENGE

The Joint Research Center Zeeland (JRCZ) was established by the HZ University of Applied Sciences to create an experience center for students, faculty, and external organizations to actively engage with data science in an interactive environment optimized for collaboration. They knew that choosing the right underlying technology platform would be crucial for delivering the collaborative, multi-dimensional experience they envisioned. ThinkHub stood out for its robust set of capabilities that enable cooperative analysis of complex data in both 2D and 3D workspaces.

SOLUTION

- (1) Large curved 1.2pp LED interactive video wall + (1) 6x1 interactive video wall
- Integrates seamlessly with a variety of hardware and web-based applications — from IP cameras and microphones to VR and 3D technology — to create immersive experiences, accommodate different workshops, and meet student needs
- Empowers students to actively participate in workshops and training through shared interactive visualizations — beyond static reports and presentations
- Use the massive digital Canvas to visualize and create digital twins, maps, 3D models, and more to discover and learn from data issues and to develop solutions

[Watch the Video](#)



Kalnin Ventures

THINKHUB MULTISITE UNIFIES HQ AND FIELD OFFICE WITH REAL-TIME COLLABORATION

CHALLENGE

BKV Operating, located in Pennsylvania, is the operational arm of Denver-based Kalnin Ventures. The office needed to provide real-time collaboration between the two offices so that automated well technology could be monitored from a shared canvas.

SOLUTION

ThinkHub MultiSite was deployed on a 12 foot, 4x2 interactive video touchscreen wall in Kalnin Ventures' Denver office and it's BKV Operating field office in northwest Pennsylvania. Now, the two offices can better communicate and collaborate with a shared Canvas that features real-time, room to room collaboration. They can create and share notes, sketches, and browse web URLs, while also sharing video, image, and PDF files for review. Participants can also wirelessly cast their individual device screens to share monitoring dashboards and project reports in real time (whether in office or connecting remotely).

[EXPLORE THE CASE STUDY](#)





Lehigh University

College of Business

T1V STORY STRENGTHENS COMMUNITY AND DRIVES INTERDISCIPLINARY LEARNING AND EDUCATION

CHALLENGE

Lehigh University College of Business wanted to create an engaging, community-oriented space in their brand-new Business Innovation Building that also celebrates the school's rich history.

SOLUTION

To accomplish this, Lehigh installed a 6x1 Planar interactive video wall in the Tauck Family Lobby. Powered by T1V Story software, this interactive video wall brings the College's storied legacy and culture of campus community to life through vivid imagery and interactive applications.

+ Interactive Timeline

Lehigh Business Timeline | Journey through the College's milestones and achievements through a highly-visual, interactive timeline

+ Interactive Image

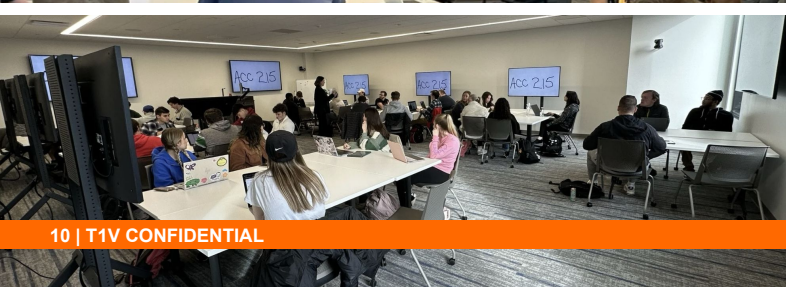
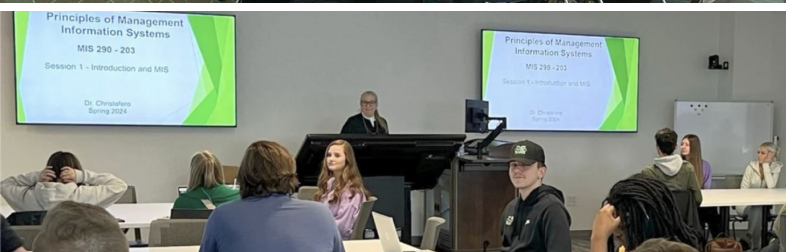
Faculty Research | Explore the College's top-tier research into the complexities of doing business and meet the faculty behind it

+ Interactive Showcase

Lehigh Business LUMInaries | Honor past and present Lehigh alumni who contribute to the business world through interactive biographies and galleries

Our Stories | Dive into compelling profiles of standout students, groundbreaking research, and accomplished alumni





Marshall University

THINKHUB EDUCATION DRIVES HYFLEX, ACTIVE LEARNING ENVIRONMENTS

CHALLENGE

Marshall University's Lewis College of Business had a goal to develop an advanced learning environment for the Brad D. Smith Center for Business and Innovation, aimed at benefiting future business leaders and innovators. Their vision was to create a dynamic space featuring interactive and collaborative technologies, envisioning it as a cutting edge educational hub.

SOLUTION

ThinkHub Education enhances hybrid learning, fosters student engagement, and facilitates the development of modern workplace skills.

- (9) Classrooms powered by ThinkHub Education technology; each classroom includes (1) ThinkHub Instructor Station; (6) Student Stations; and (4) ThinkHub Docks.
- Students collaborate on shared displays with wireless screen sharing, promoting real-time data visualization, hybrid connectivity, and peer group collaboration
- Instructors can view Student Station Canvases, provide real-time feedback, and broadcast content to Student Stations
- Supports real-time, synchronous and asynchronous classroom activities, deepening engagement and accessibility

[Explore the Case Study](#)



NetApp

Redefining Global Teamwork for NetApp's Bengaluru Office

CHALLENGE

NetApp commissioned a new campus in Bengaluru, India, that would house 3,500 employees - making it the largest campus company-wide. NetApp's biggest challenge was to create a scalable, consistent user experience across a variety of meeting room types, that would support BYOD and wireless collaboration from room to room.



SOLUTION

T1V's collaboration platform provides a single, seamless cross-campus experience in 293 ViewHub rooms and 14 ThinkHub rooms. The T1V app supports macOS, iOS, Windows, Android device connectivity and remote participation. ThinkHub and ViewHub are running on a variety of display sizes and types, including projectors in some of the ViewHub rooms. These cutting-edge tools are maximizing efficiency and cultivating collaboration across NetApp's global teams.

[EXPLORE THE CASE STUDY](#)

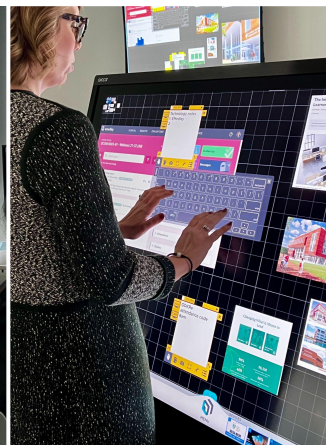


Ohio University

HERITAGE COLLEGE OF OSTEOPATHIC MEDICINE

MULTISITE, MULTICAMPUS CHALLENGE

Over the last 5 years, Ohio University's Heritage College of Osteopathic Medicine expanded from a single campus to three campuses. With the use of video conferencing technology, enrollment nearly doubled, while faculty and staff increased by 15% and 16%, respectively. Heritage College sought ways to better connect its faculty and student teams across its three campuses.



SOLUTION

Heritage College will roll out a multisite, multicampus experience for teaching and learning to take place across its 3 campuses:

- 8 ALC's powered by ThinkHub Education MultiSite
- ALC's offer total space flexibility to faculty - ability to reconfigure rooms for different class sizes and types
- 'Untethered Teaching' for instructors
- Enhanced teamwork interaction between students across different campuses

[WATCH THE VIDEO](#)



Oil and Natural Gas Corporation Limited

CORPORATE VISUALIZATION CENTER

THINKHUB POWERS DYNAMIC DASHBOARDS MONITORING OIL AND GAS WELLS AND UNITS (INCLUDING OFF-SHORE) IN REAL-TIME

DESCRIPTION

The ONGC Corporate Visualization Center 'ONGC DARPAN' is the first-of-its-kind digital hub in India that will enable monitoring of ONGC's oil and gas wells and drilling units (including offshore) centrally on real-time basis. The state-of-the-art monitoring will help in reducing human intervention and downtime, optimizing operations, and facilitating predictive maintenance.

SOLUTION

- ThinkHub visual collaboration software powers a 62ft interactive curved LED video wall
- Data visualization on a massive digital Canvas to assist with the increase in oil and gas production
- Integrated video conferencing applications to connect with monitored remote drilling rigs





Pace University

THINKHUB DRIVES EXPERIENTIAL AND ACTIVE LEARNING IN DYNAMIC, HYFLEX CLASSROOMS ACROSS MULTIDISCIPLINARY CAMPUSES

CHALLENGE

Pace University sought an alternative to the conventional lecture approach within their classrooms – with the goal to provide better experiential learning opportunities to their students. What they required was a comprehensive solution that not only catered to the need for HyFlex learning environments, but also enticed remote learners to rejoin the physical classroom post-pandemic.

SOLUTION

Pace University incorporated ThinkHub Education active learning software at two of their New York campuses, successfully addressing the requirements of their on-site and remote students within the HyFlex framework. This solution fosters active, hands-on learning across campuses and disciplines, and encourages peer-to-peer collaboration – ensuring that students remain deeply engaged and enthusiastic about their educational journey at Pace.

→ ThinkHub Education solution for active learning across (2) Pace University Campuses:

- ◆ **New York City Campus:** Classroom #1/2 | (1) 75" Instructor Station, Avocor Interactive LCD display + (9) 49" Student Station non-interactive displays
- ◆ **Pleasantville Campus:** (1) 75" Instructor Station, Avocor Interactive LCD display + (11) 49" Student Station non-interactive displays



RPM Industrial Coatings Group

THE THINKHUB + T1V STORY DUO DRIVES TALENT RECRUITMENT, CUSTOMER ENGAGEMENT, AND GLOBAL TEAM COLLABORATION AT THE RPM INNOVATION CENTER OF EXCELLENCE CHALLENGE

The state-of-the-art RPM Innovation Center of Excellence (ICE) research and development facility was designed to foster collaboration and harness the collective expertise found across their businesses. RPM was searching for a way to separate innovation from their day-to-day manufacturing activity in an emerging city to bring in young, bright talent, while also making RPM's ICE a destination point for their customers.

SOLUTION

With ThinkHub and T1V Story powering this cutting-edge facility, engineers and chemists are able to innovate and communicate with the RPM home labs for collaborative product development and introduce guests and customers to their brand family.

- ThinkHub on 98" interactive touch display in ICE welcome lobby + 85" interactive display in conference room
- (2) 65" interactive display on mobile cart in satellite lab (Hudson, NC; Americas, GA) with ThinkHub MultiSite
- Remote chemists within RPM's brand family stream IP camera feeds in the ICE Applications Lab to run panels in real-time on the ThinkHub Canvas
- T1V Story to tell the RPM "Who We Are" story to guests and customers upon entering the ICE lobby area
- Flexibility to update Story content with the Story Editor tool





Strategic Insight

ThinkHub software transforms a completely analog room into a 360° 'war room' with a massive digital landscape for team collaboration

CHALLENGE

Strategic Insight sought a flexible, software-centric solution to streamline its War Room methodology - which had traditionally involved a lot of paper being pinned around the room's four walls.

SOLUTION

ThinkHub has digitally transformed the War Room by streamlining team workflows and delivering a state-of-the-art experience to power training seminars, strategy sessions, and team collaboration.

- (4) Dual 98" ThinkHub interactive walls + (1) ThinkHub mobile cart with ThinkHub MultiSite software for real-time, room-to-room collaboration
- Hardline input integration for secure sharing of devices for government and military officials
- On-premise solution elevates data security - in tandem with password protected ThinkHub Canvases - to host classified data and sessions



[WATCH THE VIDEO](#)

UC Riverside

XCITE Center for Teaching and Learning

CHALLENGE

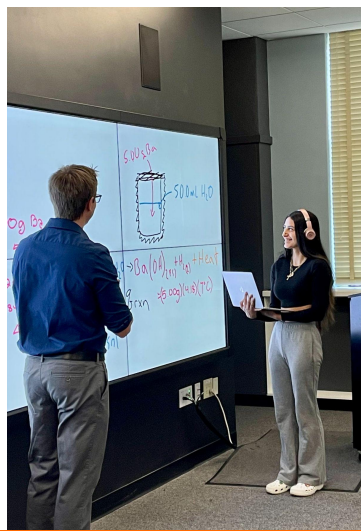
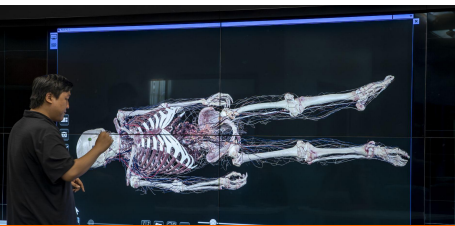
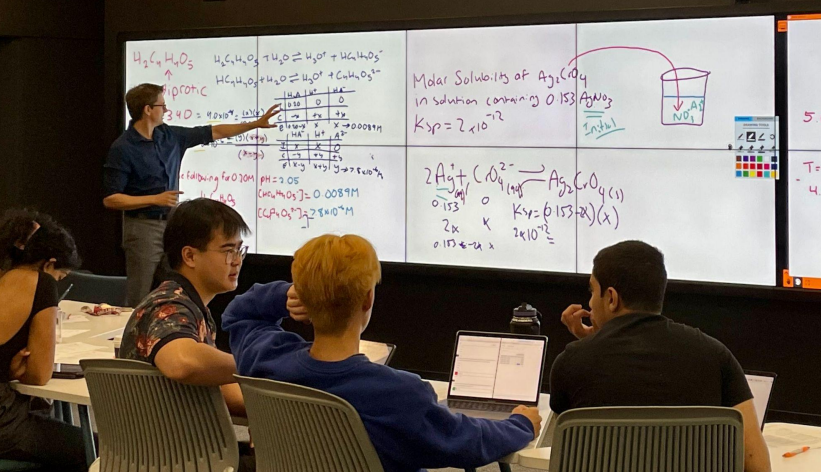
University of California, Riverside (UC Riverside) had a goal to develop a sustainable classroom solution for their XCITE Center for Teaching and Learning (XCITE), intended to benefit future generations of students and researchers. Their vision was to design an innovative space featuring a highly visual and interactive wall, envisioning it as the Classroom of the Future. They sought to enable hands-on learning for students, foster peer networks, and facilitate exploration of complex subjects.

SOLUTION

To achieve this, they utilized ThinkHub visual collaboration software, which not only enhances the overall student learning experience but also caters to the needs of their professors as they seek new ways to engage students and help them overcome barriers to learning.

- ThinkHub powers a 6x2 Clarity® Matrix® G3 LCD Video Wall System
- Integrates seamlessly with a variety of applications — from augmented to virtual reality — to create immersive experiences, accommodate different instructional styles, and meet student needs
- Supports real-time, synchronous and asynchronous collaboration among students, encouraging classroom engagement and peer-to-peer interaction to facilitate better understanding of complex topics
- Faculty participates in interactive instruction sessions which include tutorials, demonstrations, and in-person training by appointment to explore high-impact presentations, including simulations and large-scale data representations

[WATCH THE VIDEO](#)





Wenger Technical Center

THINKHUB STREAMLINES PRESENTATION OF EQUIPMENT TECHNOLOGY FOR REMOTE AND IN-PERSON CUSTOMERS AND TEAMS

CHALLENGE

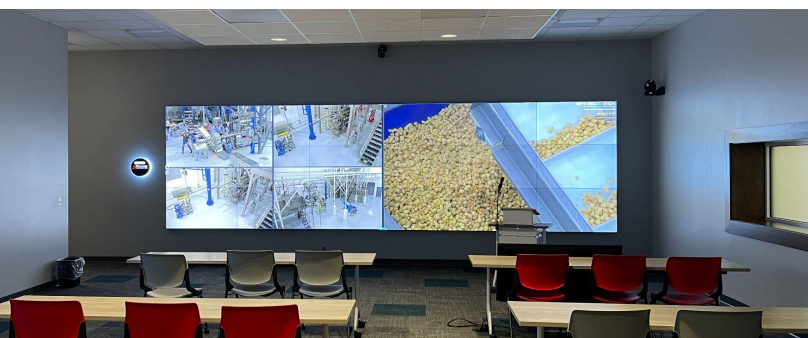
The Wenger Technical Center is a complete agrifood laboratory with pilot and production scale extrusion cooking and drying systems for researching and testing ideas, developing new products, and learning production techniques. Wenger Technical Center professionals develop, test, analyze, and produce new product prototypes and develop processes that enable new product manufacturing at full scale.

SOLUTION

With ThinkHub at the helm of the Wenger Technical Center's world class media center — Wenger teams can seamlessly demonstrate equipment, perform Wenger and client research + development testing, and facilitate education and outreach programs.

- ThinkHub visual collaboration software powers (1) 6x3 and (1) 3x3 interactive video walls, (1) 85" interactive touch display
- High resolution live stream remote viewing of Wenger equipment demonstrations on the ThinkHub Canvas with more than 20 mobile PTZ cameras on the production floor
- Instant data visualization on the ThinkHub Canvas of food process test results for clients
- Utilize built-in video conferencing capabilities for client and team meetings while simultaneously presenting content

WATCH: [VIDEO 1](#) [VIDEO 2](#)



TLV

THANK YOU.

5025 West W.T Harris Blvd Suite A
Charlotte NC 28269
704.594.1610 | hello@tlv.com
www.tlv.com