

## ThinkHub + Zoom

### SETUP + CONFIGURATION

You will need to create a separate Zoom account for each ThinkHub device that you want to integrate with Zoom video conferencing.

Create a new Zoom user in your company's account/domain, or if this is a standalone account, at [Zoom.us](https://zoom.us). This user's credentials should be set to never expire.

We recommend you name your Zoom account the same as your ThinkHub device name or room name.

**Once you have created your account, share the Zoom login credentials with T1V Support at [support@t1v.com](mailto:support@t1v.com).**

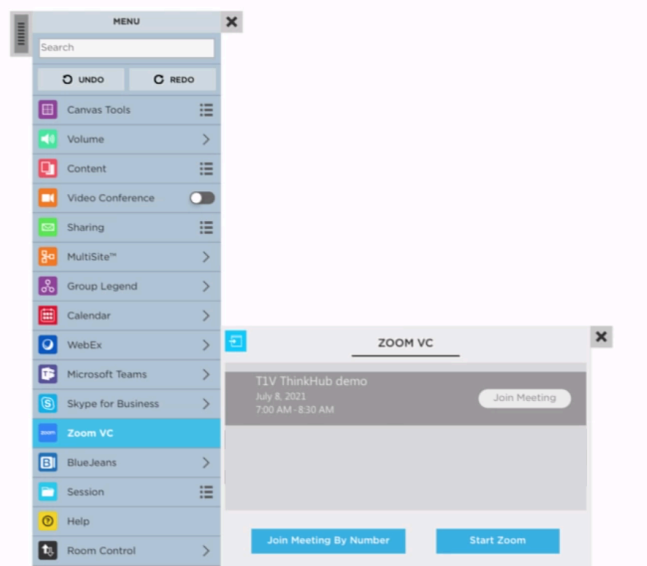
T1V Support will then configure your ThinkHub device to use your Zoom account for all future meetings.

### HOW TO USE ZOOM

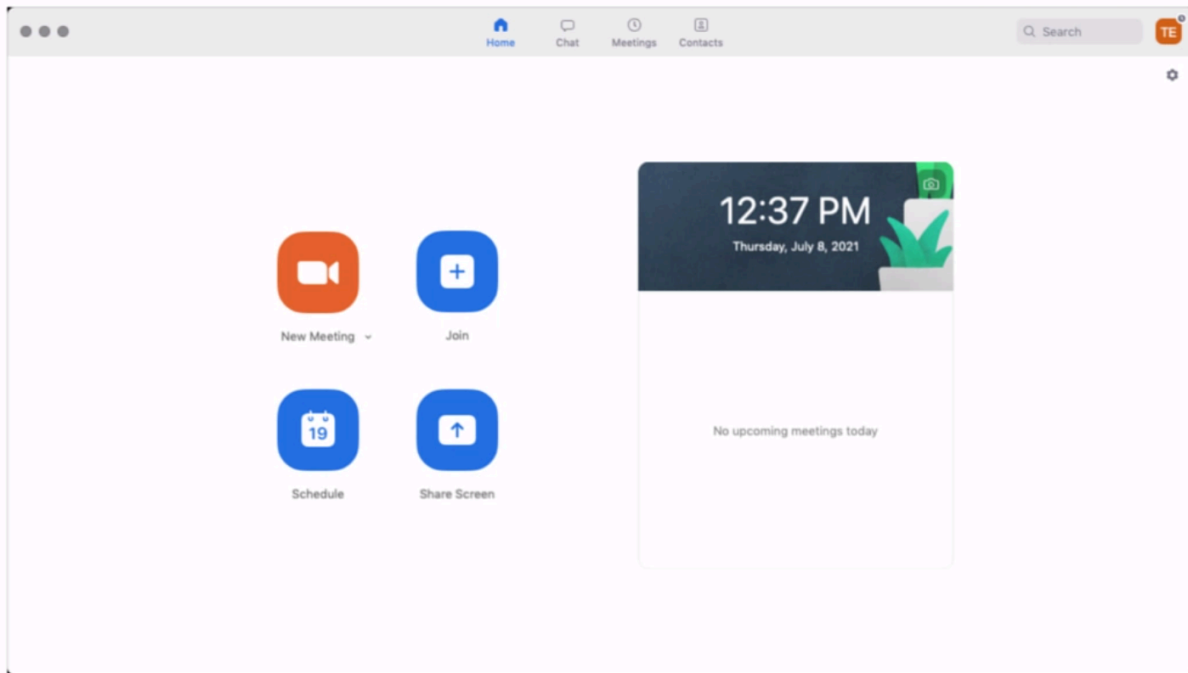
Once your Zoom for ThinkHub has been configured, you'll navigate to the ThinkHub Menu and tap on Zoom. From here you can choose to start the Zoom meeting application.

#### Start Meeting App:

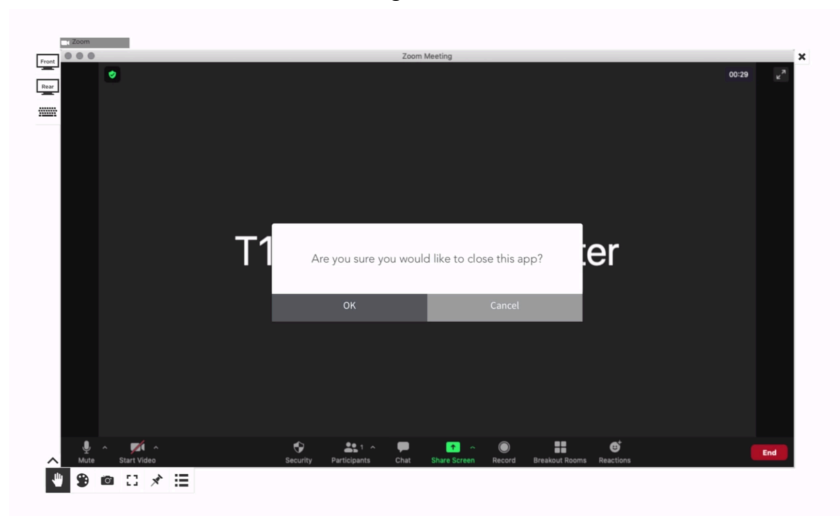
To access the Zoom meeting app, click on the 'Start Meeting App'.



ThinkHub will redirect you to the Zoom dashboard where you can start a meeting with or without video, or join an existing meeting.



To leave a meeting, put the Zoom application in edit mode so that you see the “X” in the top right hand corner. After you click on the “X”, a message will display that says, “Are you sure you would like to close this app?” Click the “OK” button to exit the meeting.



For additional information on how to Navigate the Zoom application, please click on the link below.

[Zoom Support](#)