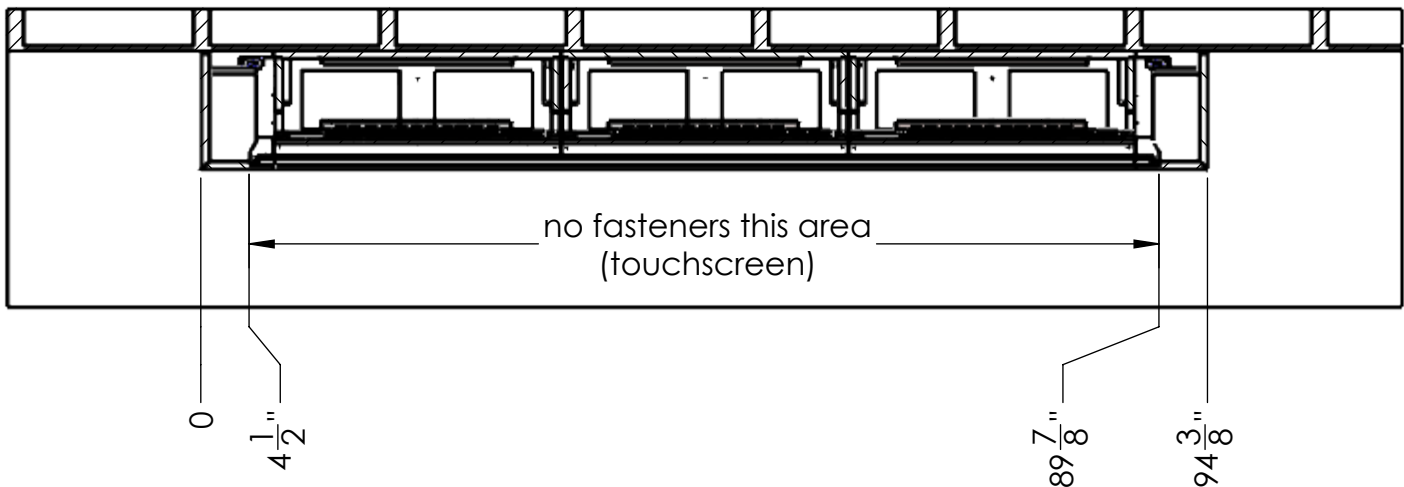
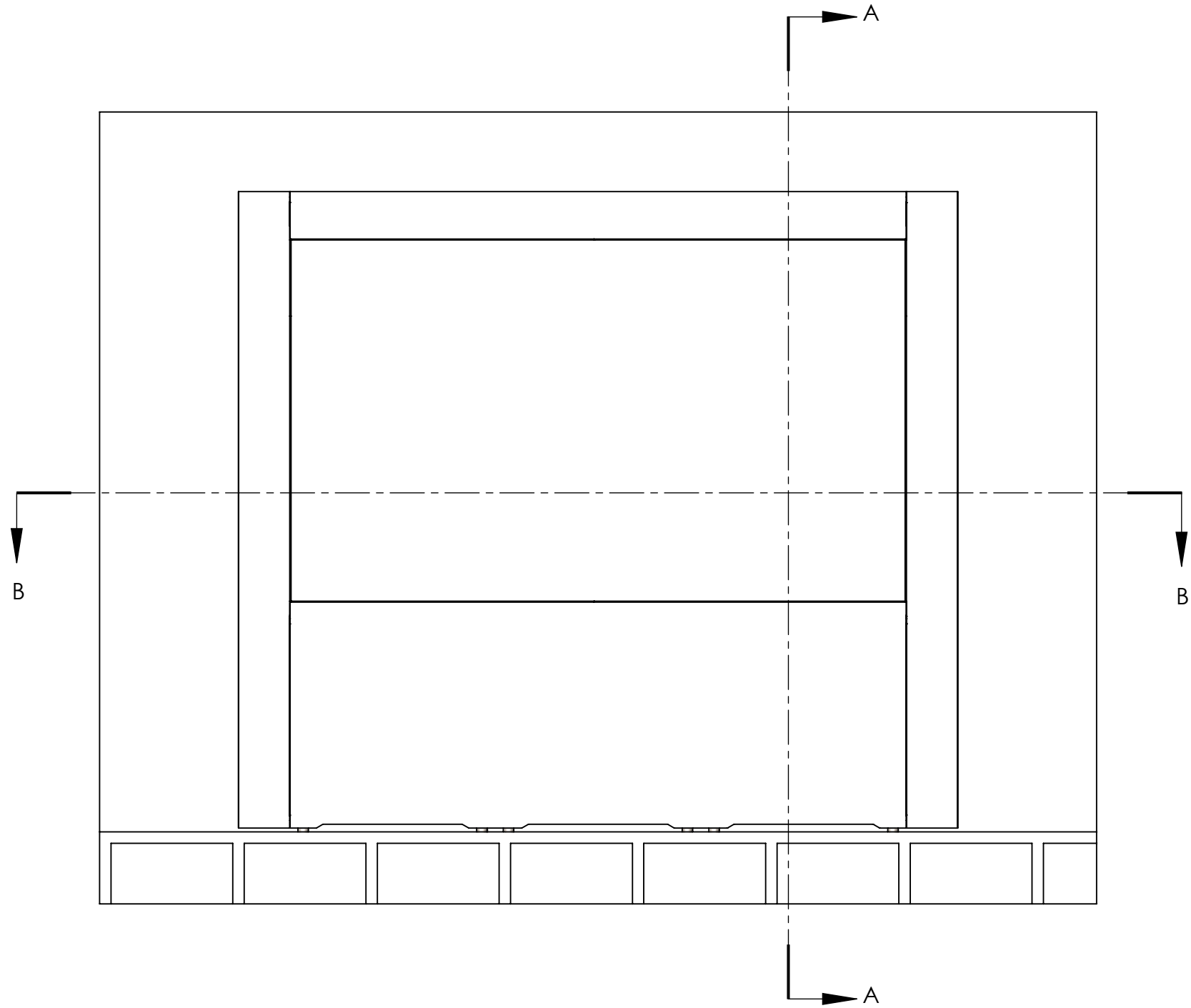
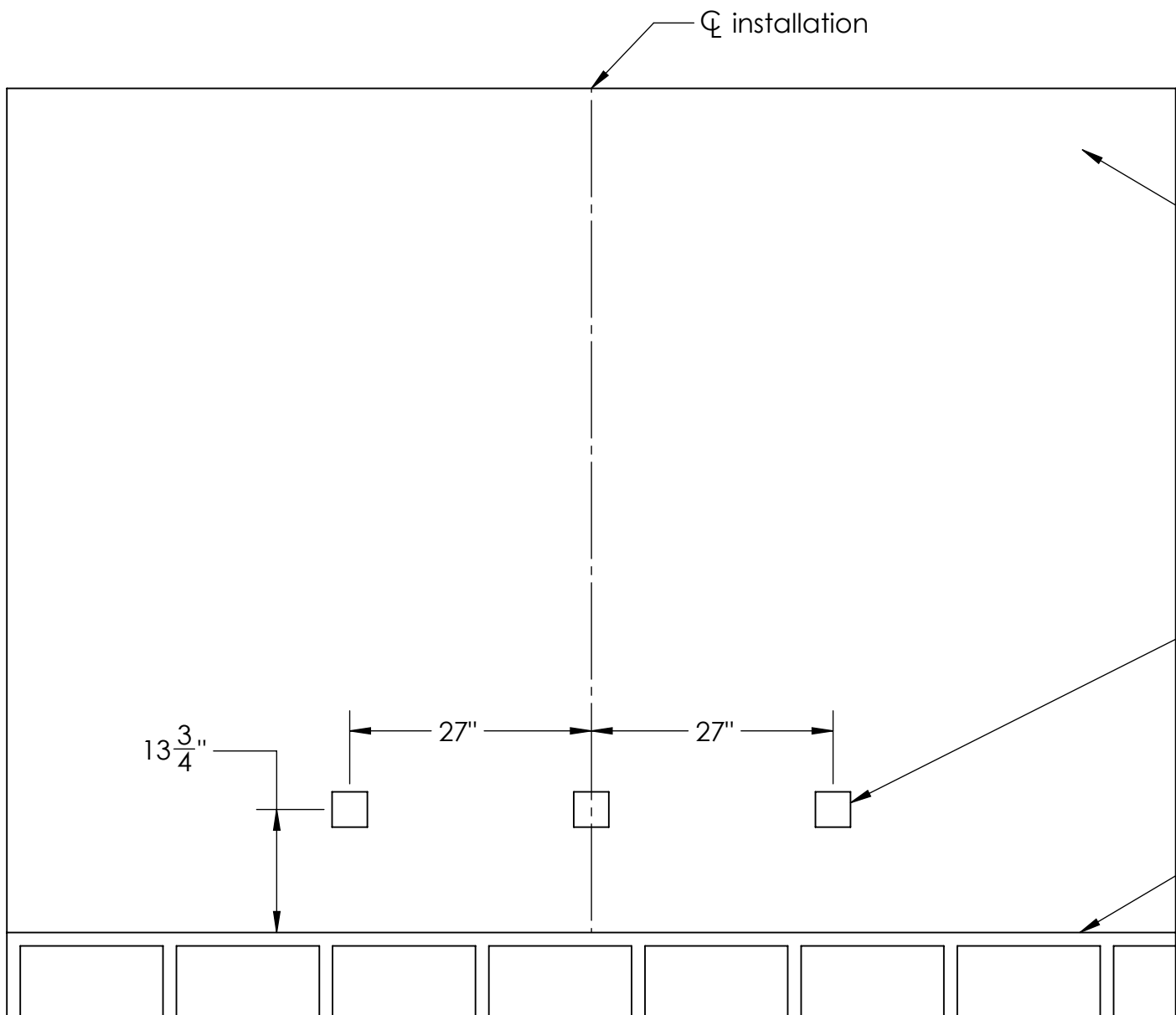


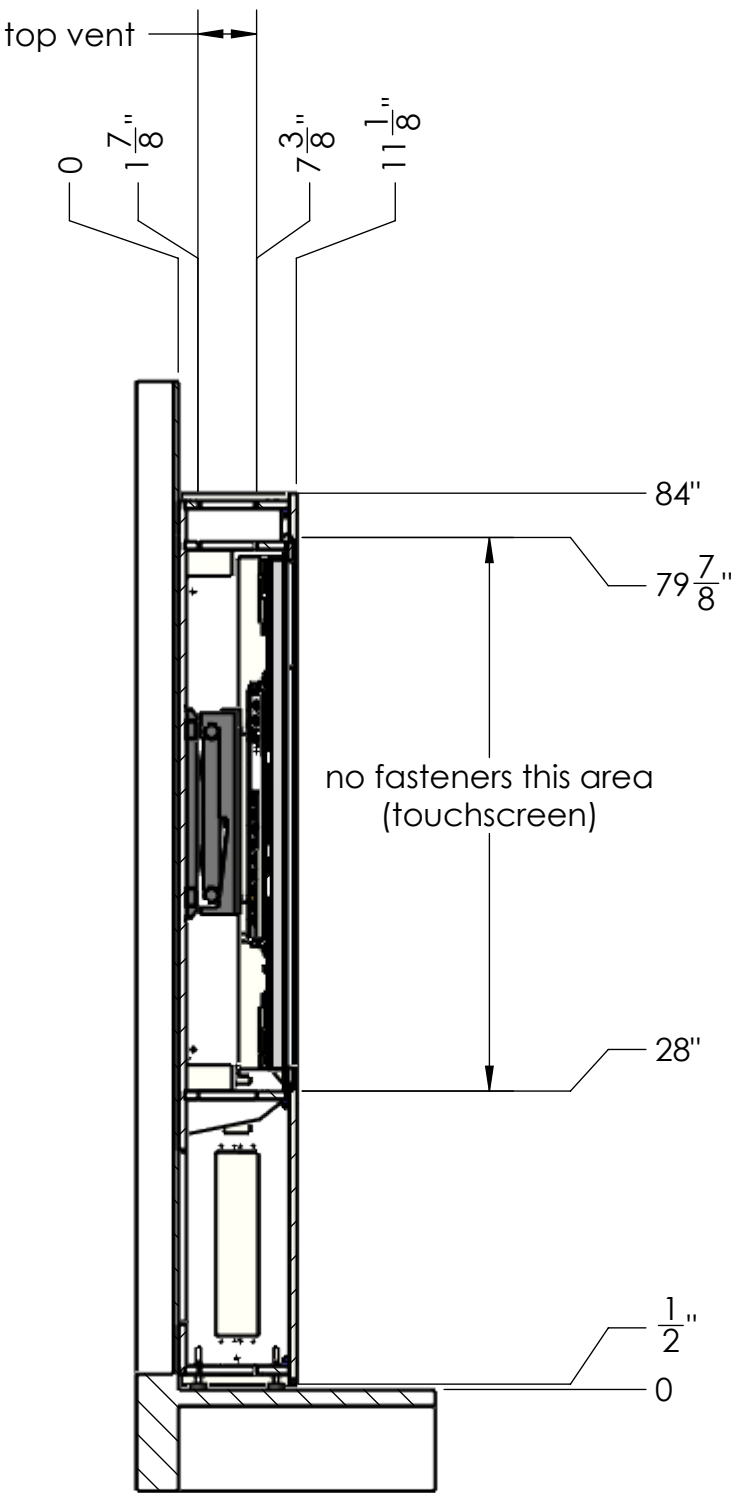
- NOTE:
- 1x 110v, 20A circuit
 - 1x CAT5 data line
 - If the CPU is to be located remotely, inquire about T1V's CPU rack module
 - If the rack module is to be used, structured wiring requirements will differ from those listed above.
 - Facade panels of wall system pop off to the front with a hard pull. Any treatments on the front face must be removable for service.
 - Facade treatments should extend to the visible area.
 - Feet are adjustable and shims may be used against wall. Use as installed dimensions to finalize facade and other millwork or allow depth for shimming.
 - Top and bottom must remain ventilated as indicated.



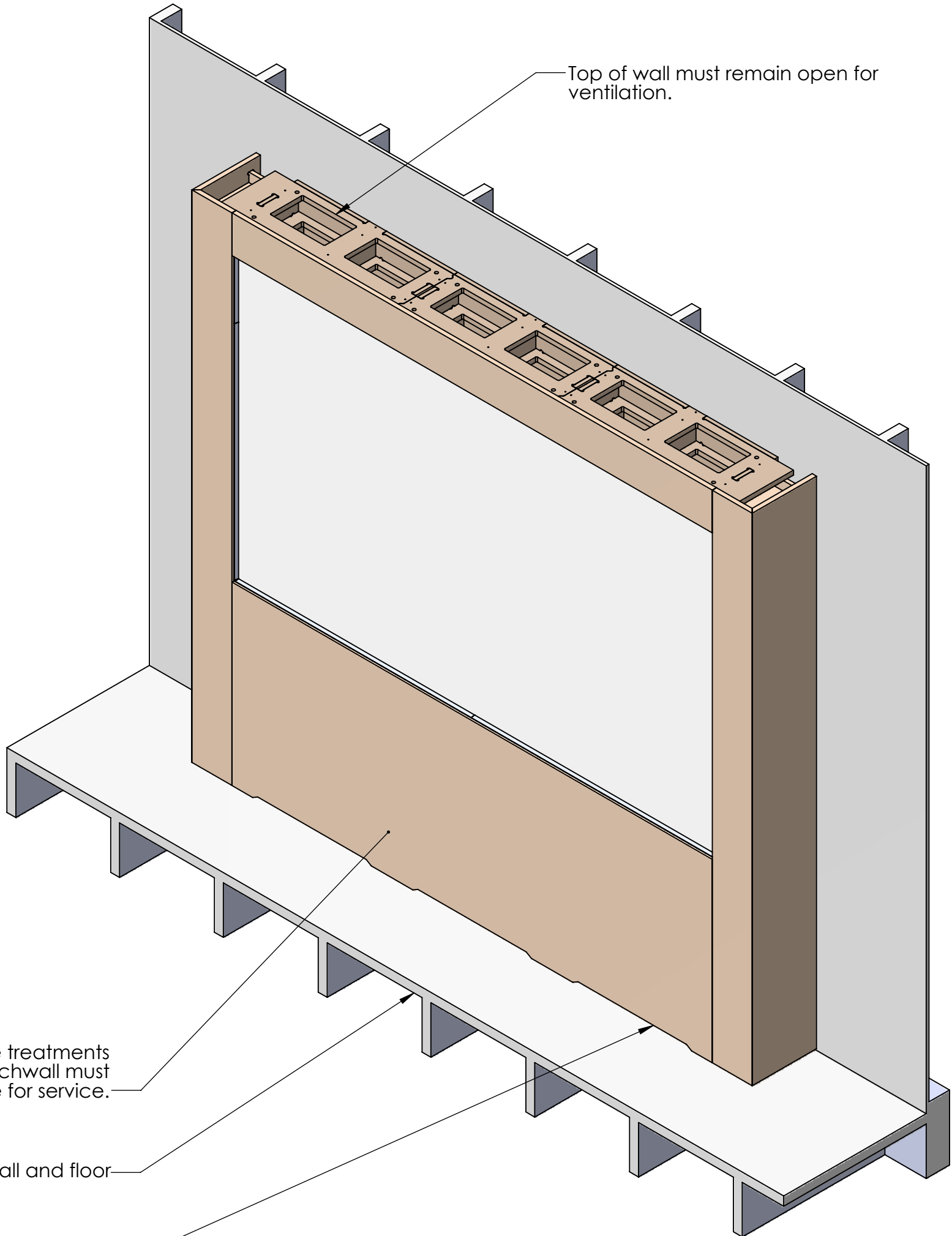
SECTION B-B



INSTALLATION SITE - FRONT VIEW



SECTION A-A



PROPRIETARY AND CONFIDENTIAL
THE INFORMATION CONTAINED IN THIS DRAWING
IS THE SOLE PROPERTY OF T1V, INC. ANY
REPRODUCTION IN PART OR AS A WHOLE WITHOUT THE
WRITTEN PERMISSION OF T1V, INC. IS PROHIBITED.

SKU:	UNLESS OTHERWISE SPECIFIED:	DRAWN	NAME	DATE
SF-OT8-355x1PF-UB	DIMENSIONS ARE IN INCHES	GOB	GOB	7/19/18
WP-OT8-355x1P-UB	TOLERANCES:	CHECKED		
	FRACTIONAL ±	ENG APPR.		
	ANGULAR: MATCH ±	MFG APPR.		
	TWO PLACE DECIMAL ±			
	THREE PLACE DECIMAL ±			
	INTERPRET GEOMETRIC TOLERANCING PER:	Q.A.		
	MATERIAL:			
	FINISH:			
APPLICATION	MATERIAL THICKNESS:	DO NOT SCALE	SCALE: 1:8	WEIGHT:

T1V	VERSION 1
TITLE: WP355 - installation	SIZE D
SHEET 1 OF 1	