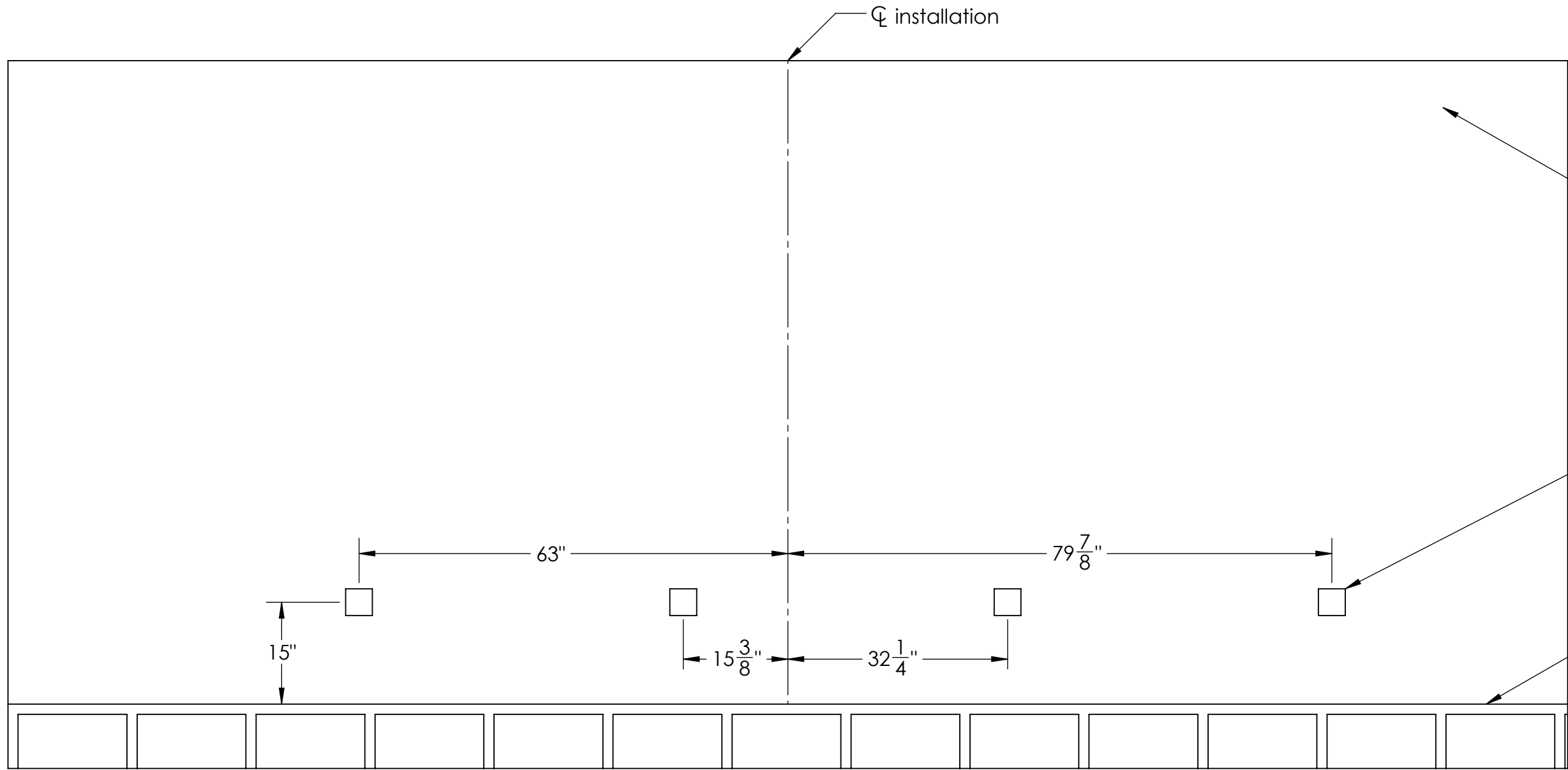
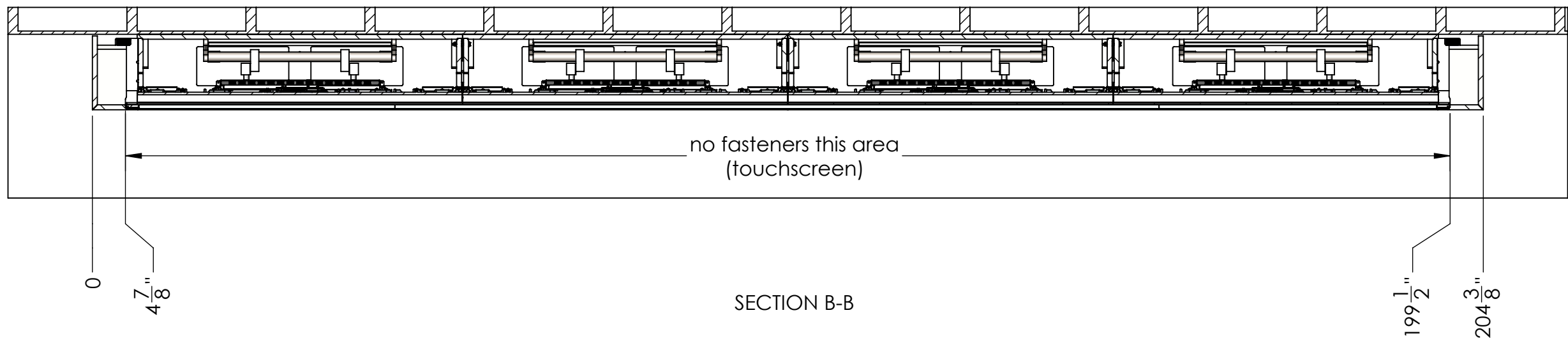
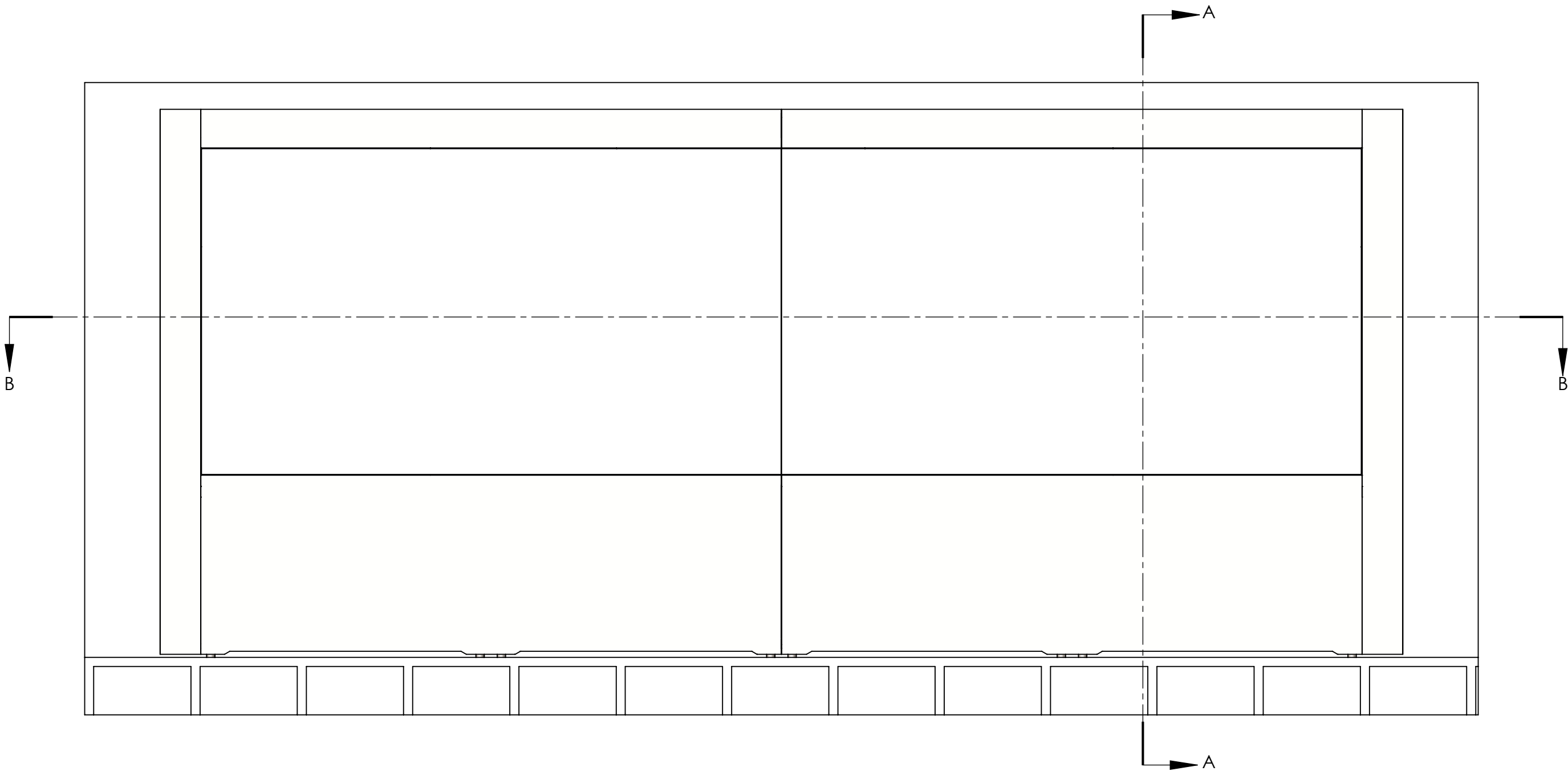
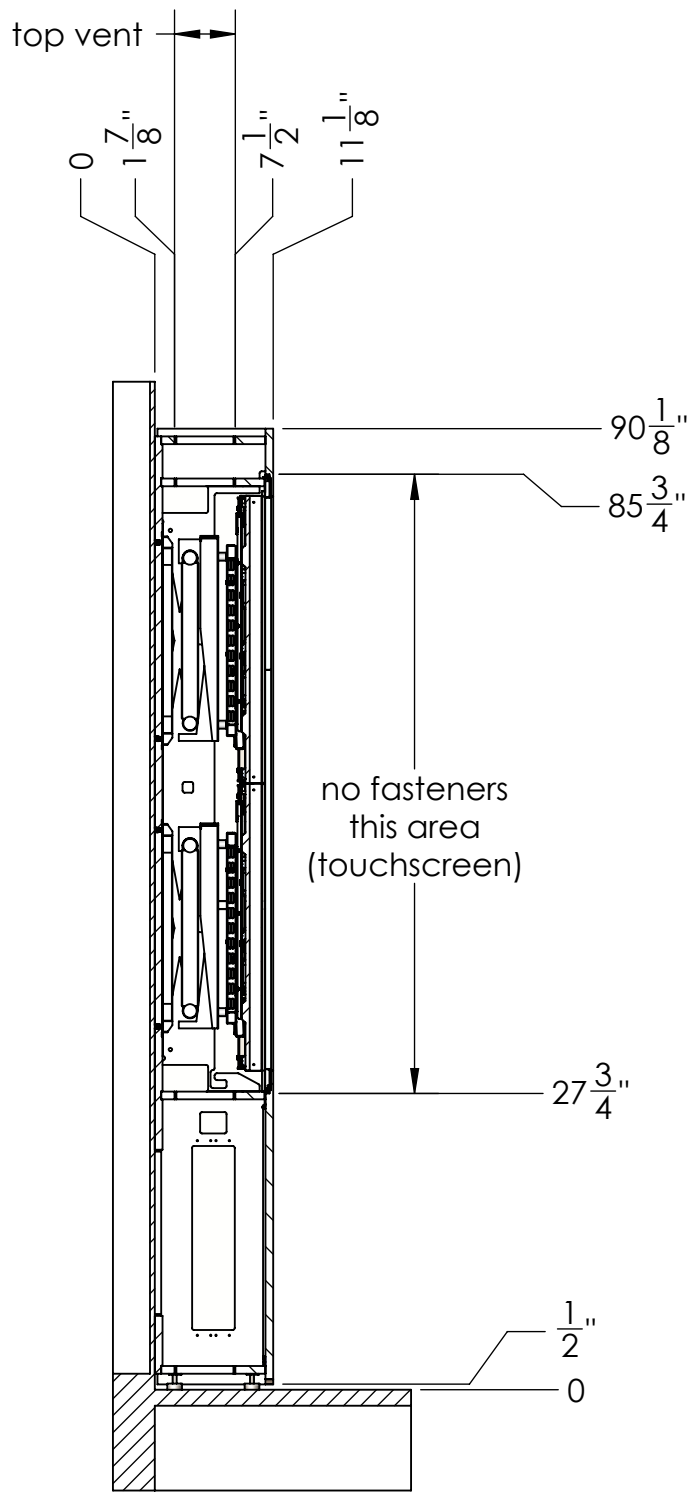


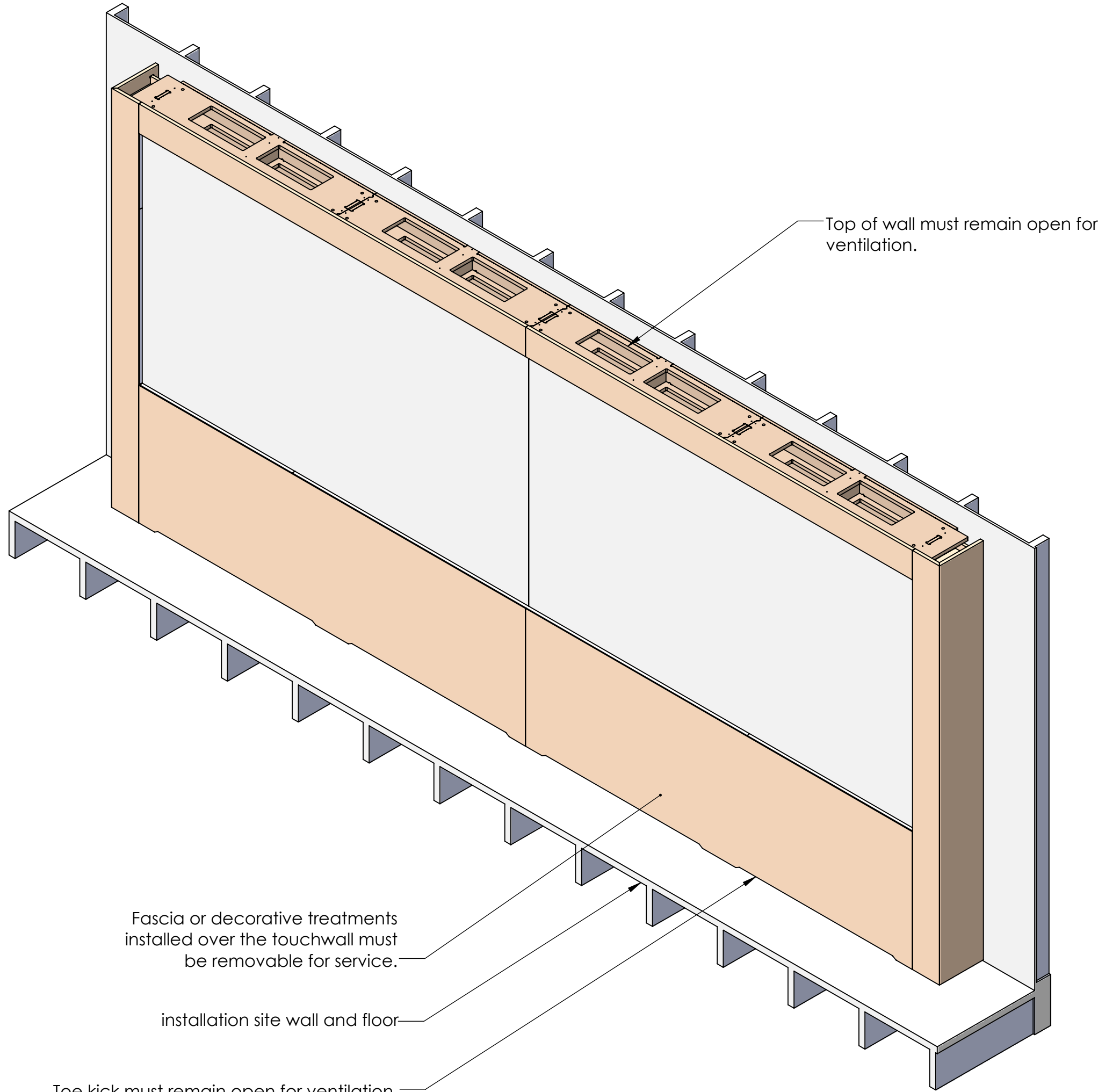
- NOTE:
- 2x 110v, 20A circuits
 - 1x CAT5 data line
 - If the CPU is to be located remotely, inquire about T1V's CPU rack module
 - If the rack module is to be used, structured wiring requirements will differ from those listed above.
 - Allow at least 1" space on either side of device when recessing into a wall.
 - Top and bottom must remain ventilated as indicated. Allow 3" above, open to front or back unless ventilated into wall and plenum above.
 - Facade panels included with wall system pop off to the front with a hard pull. Many facade treatments may be attached to these panels directly. Any facade treatments must be removable for service regardless of installation method.
 - Facade treatments should extend to the visible area.
 - Device must be installed completely flat, vertical and level. Shimming or leveler adjustment may be required which will increase installed thickness or height. Leave allowance accordingly when recessing this device into a wall and allow for facade treatments to be trimmed to field measurements.



INSTALLATION SITE - FRONT VIEW



SECTION A-A



No special wall preparation is required. The touchwall can be attached to wood or metal studs. It will ease installation if the wall is covered in 3/4" plywood, but it is not required.

On a wall installation which has an onboard CPU, these are ideal locations for power and data outlets. +/- 6" is ok around these centers. For a wall installation which has a remote CPU, one or more of these locations should be open for structured wiring to server room.

No special floor preparation required.

PROPRIETARY AND CONFIDENTIAL
THE INFORMATION CONTAINED IN THIS DRAWING
IS THE SOLE PROPERTY OF T1V, INC. ANY
REPRODUCTION IN PART OR AS A WHOLE WITHOUT THE
WRITTEN PERMISSION OF T1V, INC. IS PROHIBITED.

SKU:	UNLESS OTHERWISE SPECIFIED:	DRAWN	NAME	DATE
WP-OT8-048-455x2L-EB	DIMENSIONS ARE IN INCHES TOLERANCES: FRACTIONAL ± ANGULAR: MACH ± TWO PLACE DECIMAL ± THREE PLACE DECIMAL ± INTERPRET GEOMETRIC TOLERANCING PER: MATERIAL	CHECKED	GOB	6/26/18
	ENG APPR:	ENG APPR:		
	MFG APPR:	MFG APPR:		
	Q.A.	Q.A.		
	FINISH			
	DO NOT SCALE			
APPLICATION	MATERIAL THICKNESS			

T1V		VERSION
TITLE: WP4552EB - installation		1
SCALE: 1:18 WEIGHT:		SIZE D
SHEET 1 OF 1		