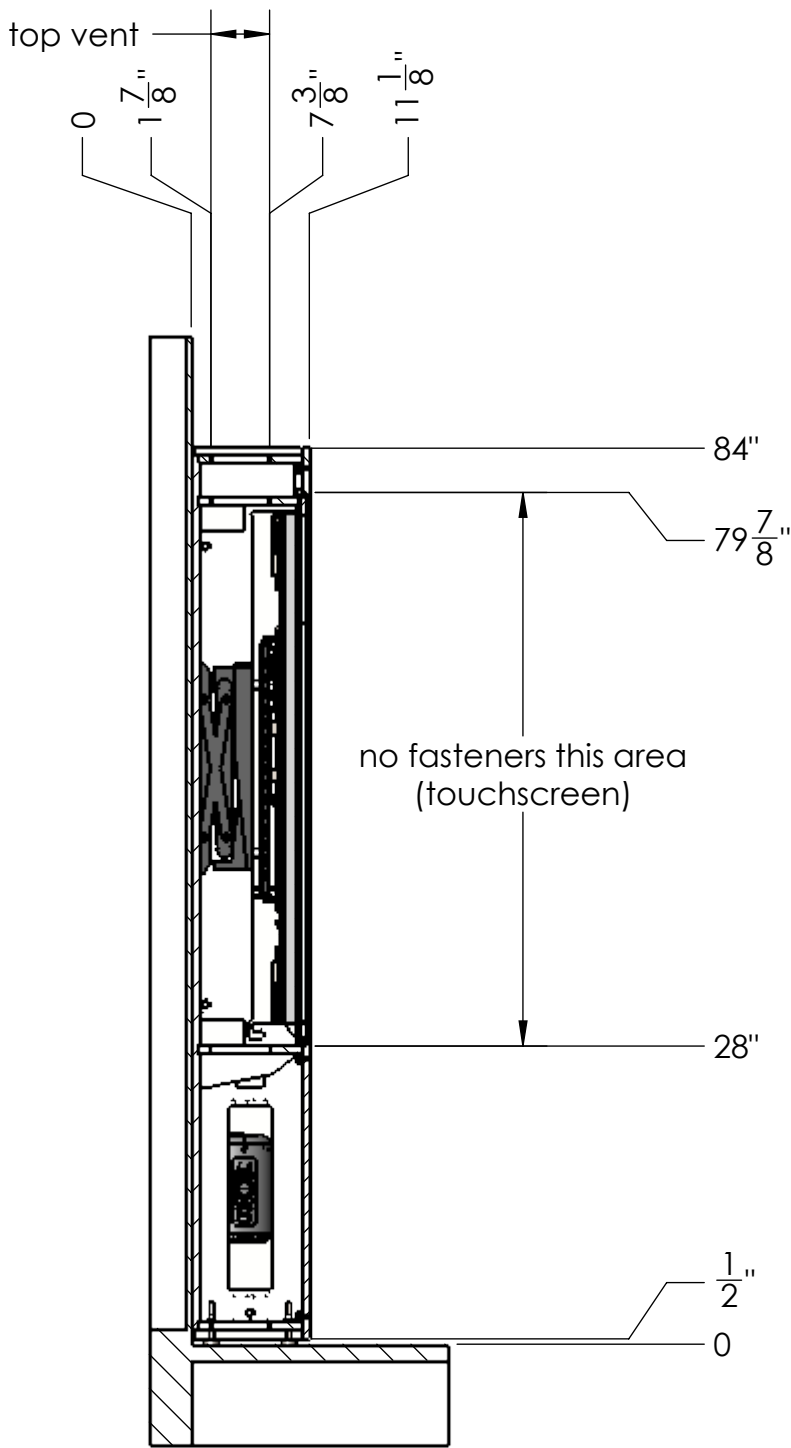
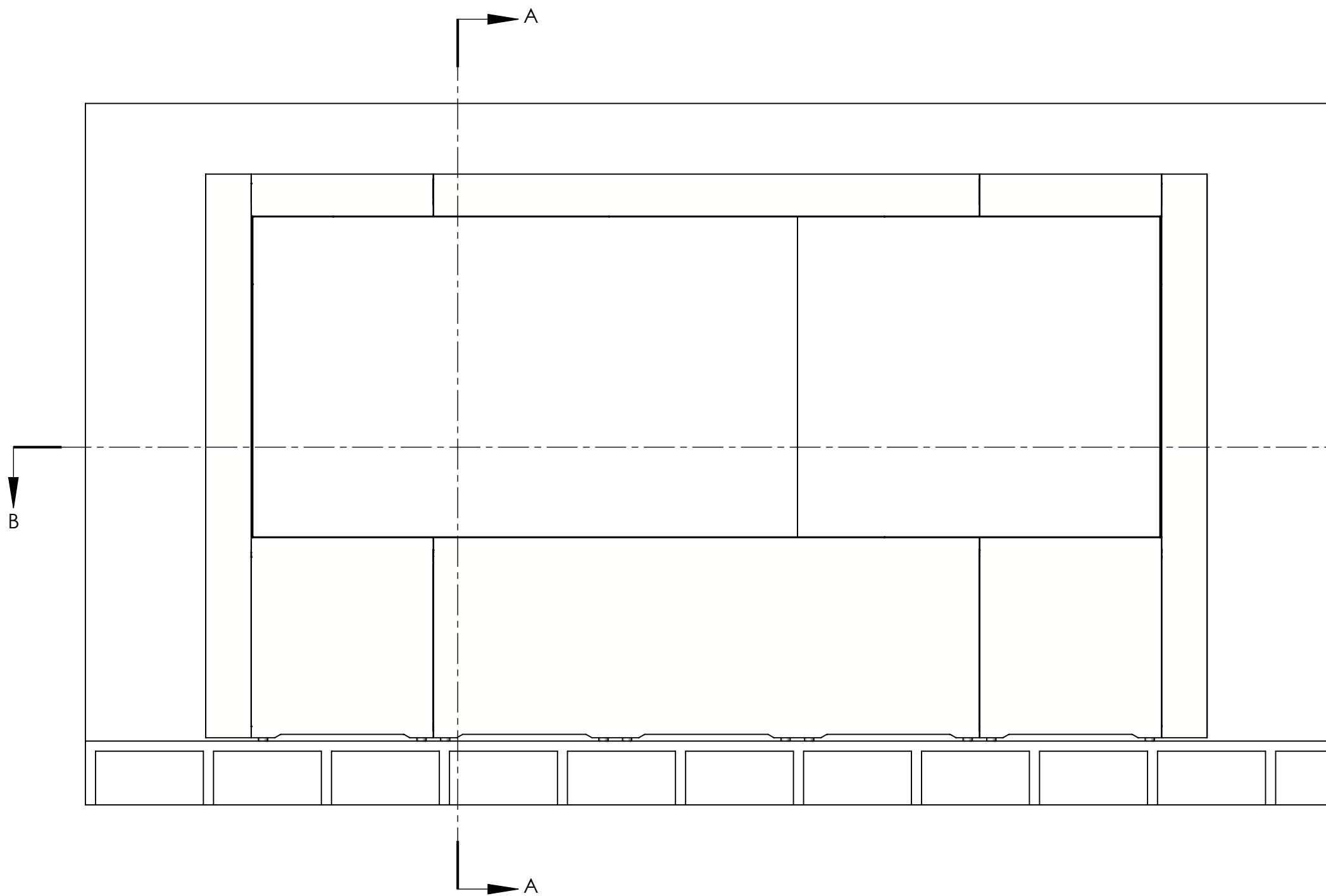
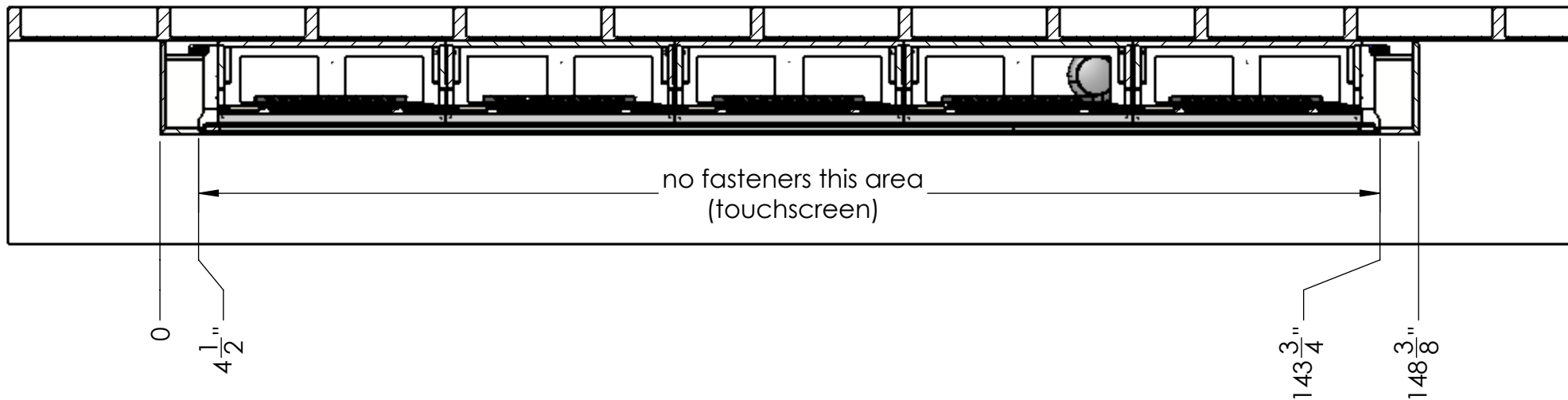


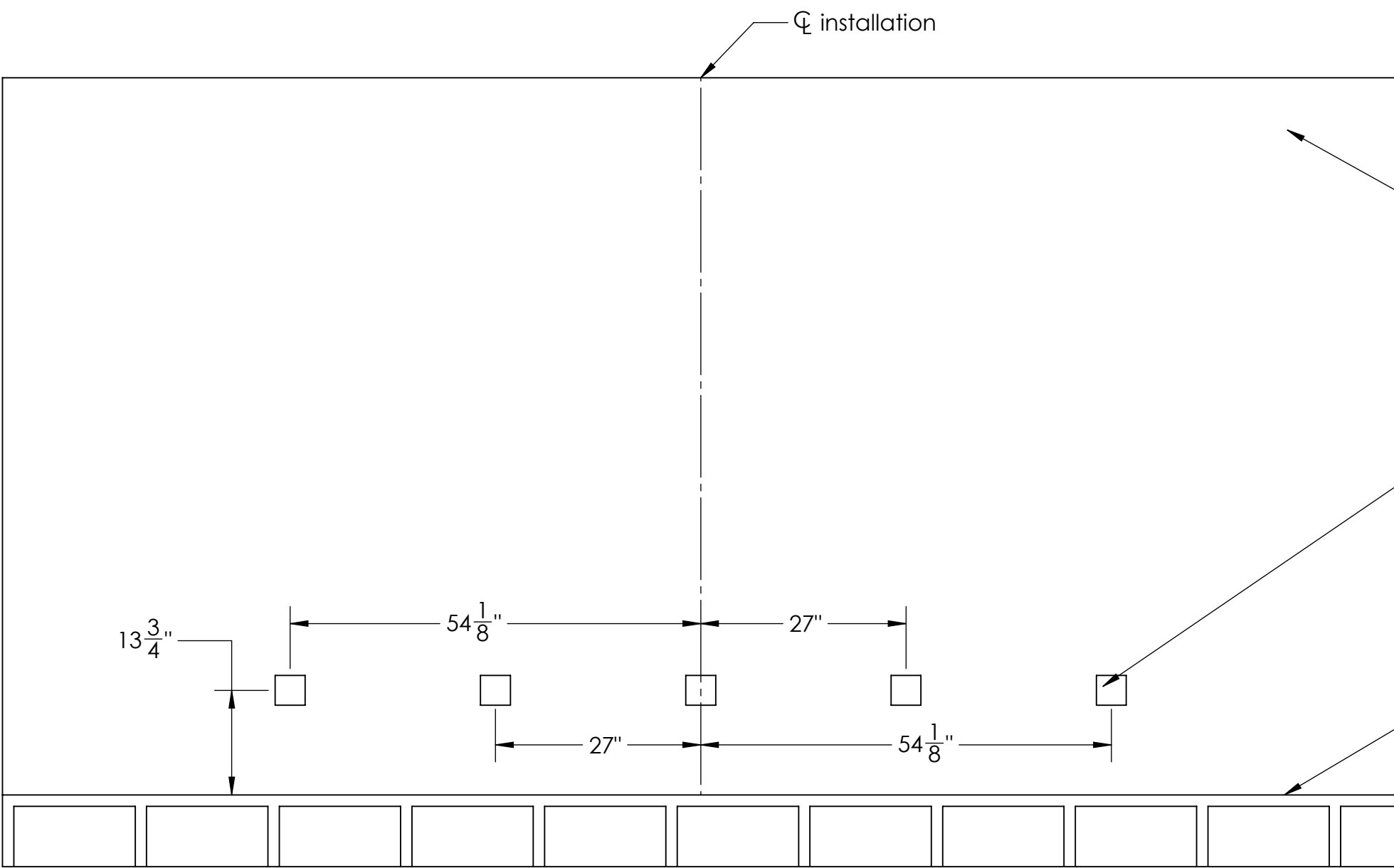
- NOTE:
- 2x 110v, 20A circuits
  - 1x CAT5 data line
  - If the CPU is to be located remotely, inquire about T1V's CPU rack module
  - If the rack module is to be used, structured wiring requirements will differ from those listed above.
  - Facade panels of wall system pop off to the front with a hard pull. Any treatments on the front face must be removable for service.
  - Facade treatments should extend to the visible area.
  - Feet are adjustable and shims may be used against wall. Use as installed dimensions to finalize facade and other millwork or allow depth for shimming.
  - Top and bottom must remain ventilated as indicated.



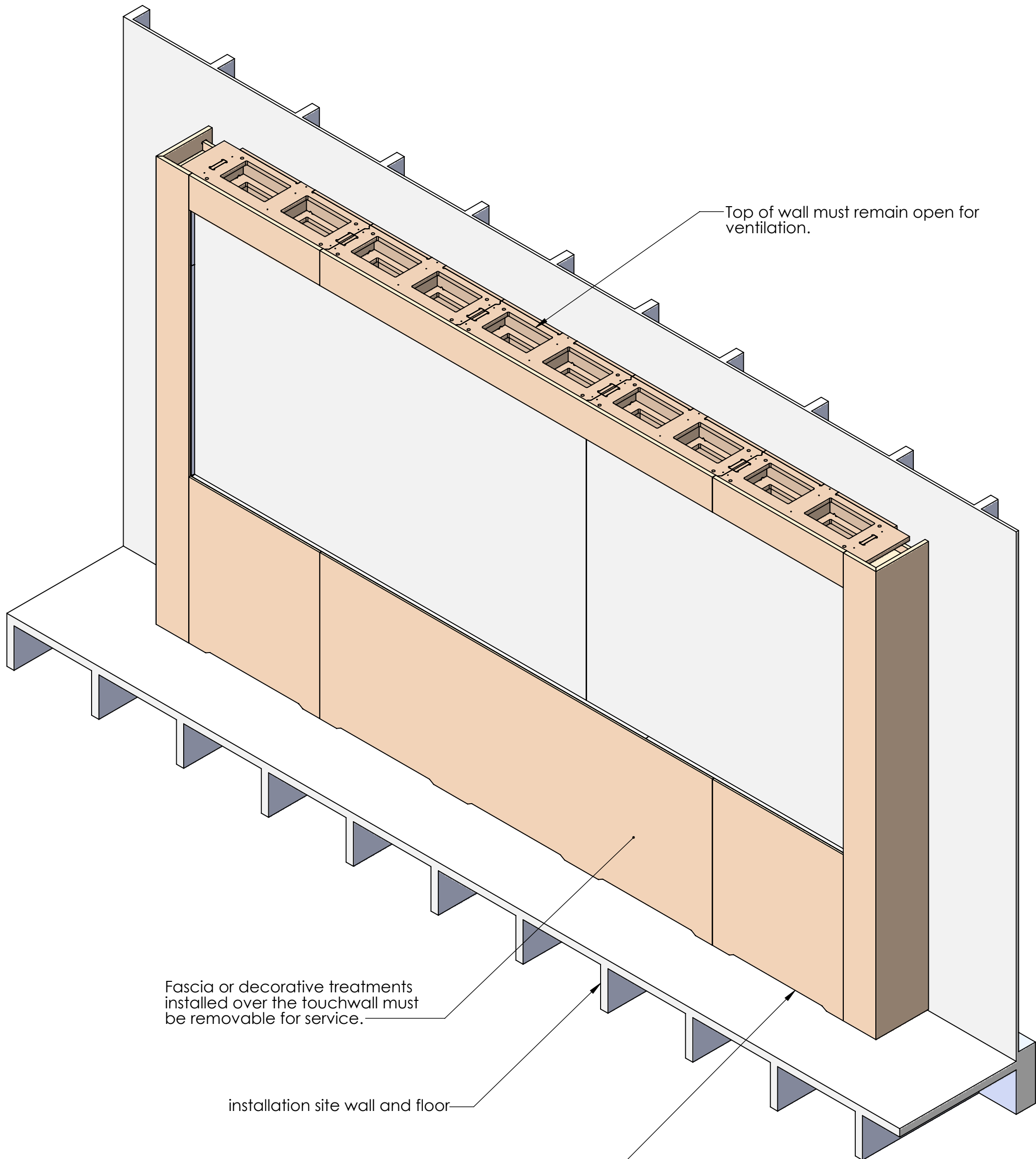
SECTION A-A



SECTION B-B



INSTALLATION SITE - FRONT VIEW



SKU:		UNLESS OTHERWISE SPECIFIED:		NAME		DATE		<div>T1V</div>	
SF-OT8-555x1PF-UB		DIMENSIONS ARE IN INCHES		DRAWN		2/21/18			
WP-OT8-555x1P-UB		TOLERANCES:		CHECKED					
		FRACTIONAL: ±		ENG APPR.					
		ANGULAR: MATCH ±		MFG APPR.					
		BEND ±		Q.A.				TITLE: WP555	
		TWO PLACE DECIMAL ±						VERSION 2	
		THREE PLACE DECIMAL ±						SIZE D	
		INTERPRET GEOMETRIC TOLERANCING PER:							
		MATERIAL:							
		FINISH:							
APPLICATION		MATERIAL THICKNESS:		DO NOT SCALE		SCALE: 1:8 WEIGHT:		SHEET 1 OF 1	

PROPRIETARY AND CONFIDENTIAL  
THE INFORMATION CONTAINED IN THIS DRAWING  
IS THE SOLE PROPERTY OF T1V, INC. ANY  
REPRODUCTION IN PART OR AS A WHOLE WITHOUT THE  
WRITTEN PERMISSION OF T1V, INC. IS PROHIBITED.