

T1V

T1VHubTM

USER GUIDE

Contents

What is T1V Hub?	3
Idle State	4
T1V App	5
Connecting your device	5
The T1V app Menu	7
Settings - General	9
Settings - Registration	10
Settings - Audio	11
Connecting multiple devices	11
T1V Support	12
Additional T1V Hub Resources	12

What is T1V Hub?

T1V Hub is a presentation tool designed to help you quickly mirror device screens to a shared display. This is a non-touch solution that enables groups to wirelessly screencast content.

Visit t1v.com/hub to learn more.



Idle State

When there are no devices connected to T1V Hub, it will display this screen:



T1V App

The T1V application enables you to connect any laptop or mobile device wirelessly to all T1V devices (ThinkHub and T1V Hub). The T1V app supports macOS, iOS, Android, and Windows.

To install T1V on your device, visit t1v.com/app.

Connecting your device

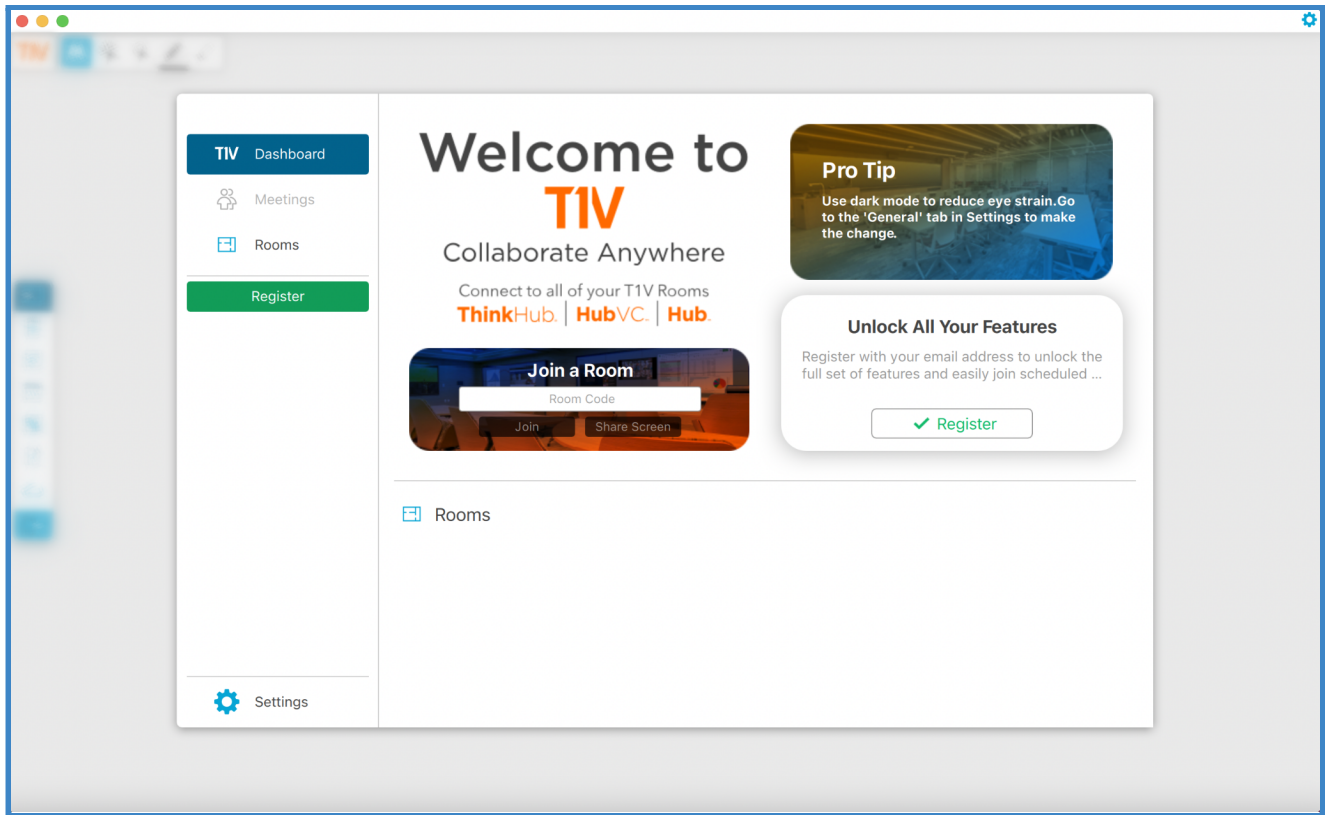
Once you have installed the T1V app on your device, open the T1V app and head to your dashboard view. From here, you can navigate to the 'Meetings' tab in your app. Tap 'Join Meeting,' where you'll be prompted to enter your Room ID and Passcode. You can find this information in the upper right corner of the Hub display.



Device Name

Room ID

Passcode



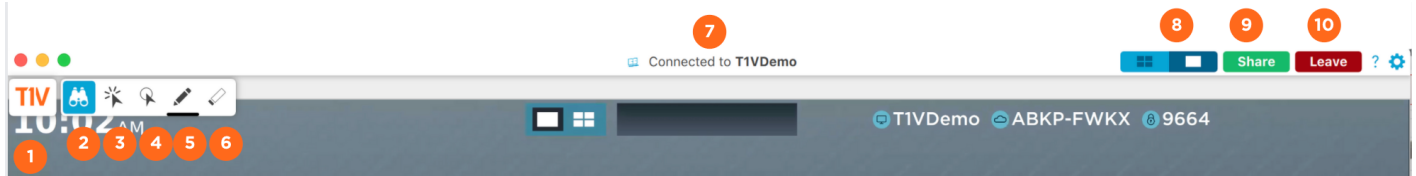
Note: T1V users can connect to their T1V display from anywhere in the world, even from a cellular network connection.

Once you have connected to a T1V room display, that device will automatically appear in your 'Rooms' list - this allows you to quickly connect to future sessions. After your first connection, all you will need to join that same display will be the Room passcode (4 digit code found in the upper corner of your display).

As an additional layer of security, the passcode is required to connect devices to the display via the T1V app. Your administrator can specify a static passcode, or request the passcode to reset automatically every 30 minutes. You may also request installations where no passcode is required.

The T1V app Menu

The Menu is located on the upper left of your T1V app. Here is a detailed breakdown of what you can do from your T1V app Menu:



1. Home

This takes you back to your home menu.

2. View

View only.

3. Point

In this mode, you can click anywhere on your view of T1V Hub to create a digital pointer that other meeting participants can see.

4. Control

This mode is ThinkHub-specific. This is not available in T1V Hub.

5. Annotate

This mode allows you to annotate anything on the T1V Hub. Select your color and pen size.

6. Erase

This mode allows you to erase your annotations.

7. Connected To:

This will display the name of the T1V Hub room device you are connected to. Click on the 'Connected to...' text to copy your T1V application credentials to your clipboard. You can now easily share this information with remote session participants who are not in the T1V Hub room.

8. Toggle between single and quadrant mode

Use this toggle to switch between showing a single screen and multiple screens.

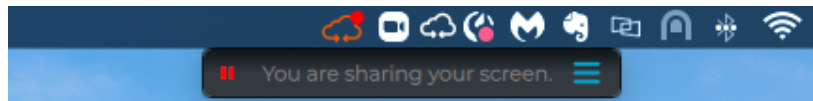
9. Share

Tap 'Share' to share your device to the Hub display. This will take you to a screen sharing window where you can select to share a window or share your entire device screen.

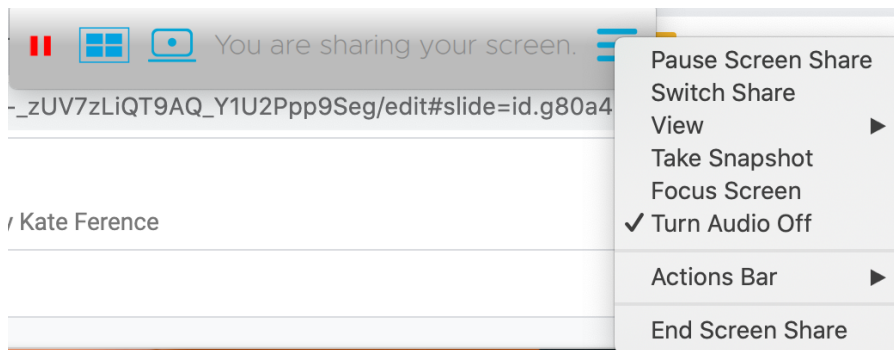
10. Leave

Select this button to end your connection to the ThinkHub session.

When sharing, you will see a white or black bar (depending on if you are in Light/Dark Mode) at the top of your device screen. This indicates you are successfully casting your device screen to the T1V Hub display.



There are additional screen-sharing options available in the hamburger menu.



Pause Screen Share

This will pause your screen share and take you back to the T1V Hub view, so you can see what other users in the meeting are seeing.

Switch Share

This opens the screen sharing selection window, allowing you to switch between sharing your desktop or different content windows.

View

This will take you back to the T1V Hub view, so you can see what other users in the meeting are seeing.

Take Snapshot

This will take a snapshot of the T1V Hub display.

Turn off Audio

This will turn off audio sharing from your device to the T1V Hub.

Actions Bar

This allows you to add action icons to your sharing bar for faster access to those controls. You can add or remove the shortcut icon to Switch Share, Take Snapshot, Focus Screen, and End Screen Share

8. End Screen Share

Settings - General

1. My Device Name

This is how your device will appear on the Hub display when connected. Enter the name you wish to appear.

2. Restore to Defaults

Tap here to undo any changes you've made to your settings and default to T1V's out-of-the-box settings.

3. TouchControl™

TouchControl is a ThinkHub-only feature.

4. In-App Notifications

You can choose to enable or disable the in-app notifications. Notifications include scheduled meetings, session ending alerts, etc...

5. Email Notifications

You can choose to enable or disable the scheduled meeting email notifications.

6. Theme

The T1V application allows you to switch between light mode and dark mode. Dark mode uses a dark color scheme that helps reduce eyestrain.

7. Download Folder

Download Folder enables you to select the default download location for all downloaded content.

8. Quick Cast

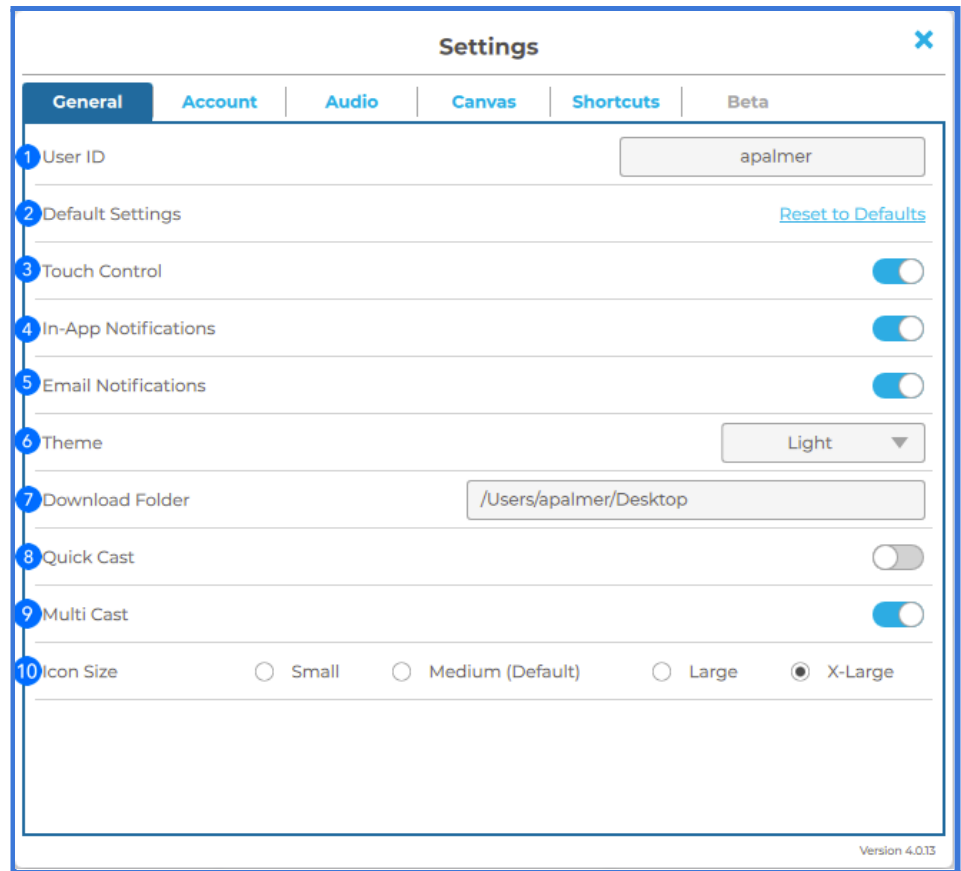
Toggle on / off to automatically share your device screen to the room display when you connect.

9. MultiCast

Toggle on MultiCast to enable sharing multiple screens or windows to an in-room device simultaneously.

10. Icon Size

Choose the size of your T1V app icons.



Settings - Registration

1. Email Address

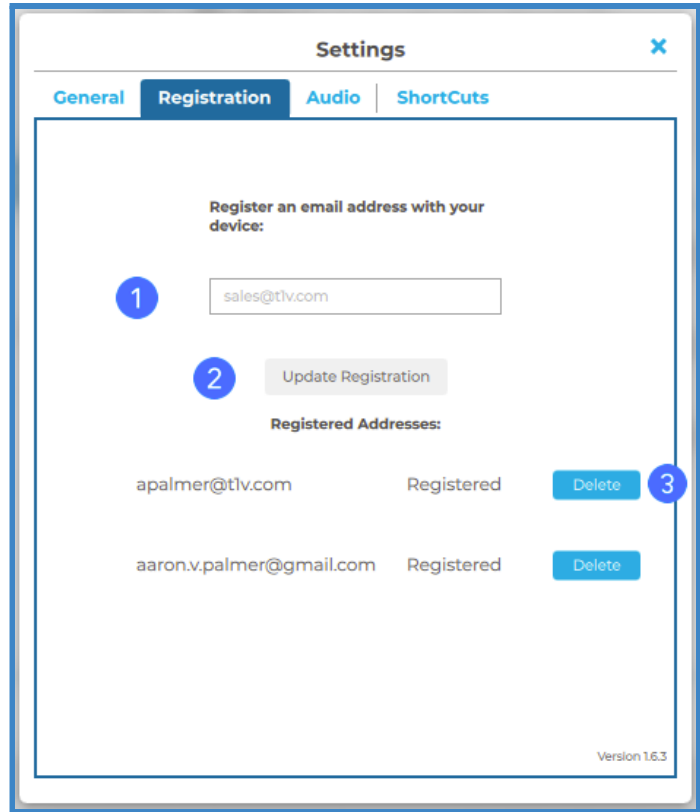
Enter in your desired email address. Registering an email address will allow you to take advantage of the ThinkHub Scheduling.

2. Update Registration

Click the Update Registration button to send a registration request. An email will be sent to that email address to confirm your registration.

3. Registered Addresses

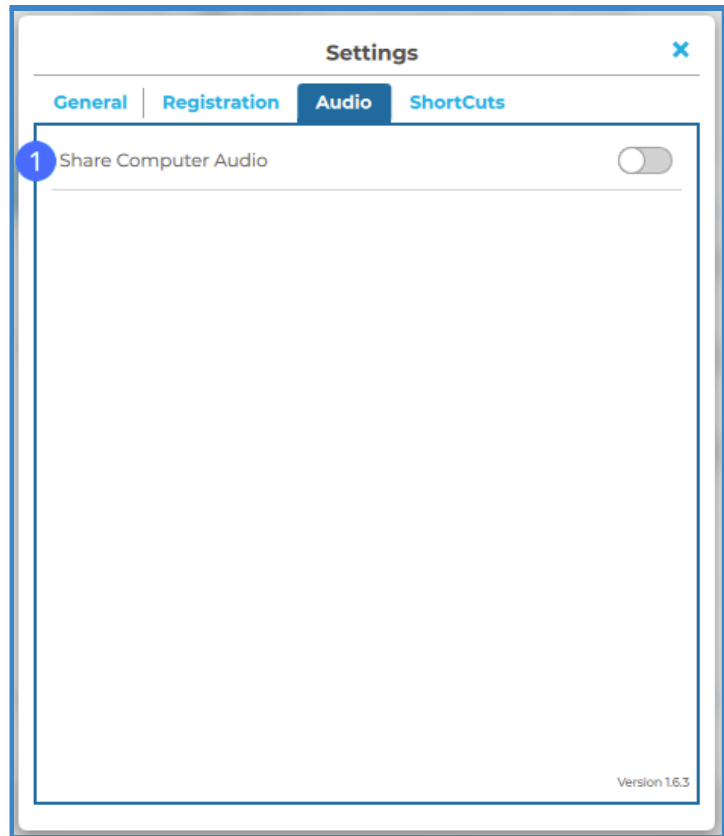
Once the registration has been completed, the registered email address(es) will display in the window.



Settings - Audio

1. Share Computer Audio

Configure your audio to play through the room display (as opposed to playing audio from your individual device). This feature applies to Mac laptops only.



Connecting multiple devices

T1V Hub supports the sharing of up to four screens in 1080p resolution and up to 16 screens in 4K resolution. However, depending on your T1V Hub display hardware, the number of connections available to you may vary. Users may connect multiple devices at a time, and use the AirConnect app to control which screen(s) to focus on at a time as needed. So you can have an entire room full of devices 'connected' to the T1V Hub display, but be actively viewing anywhere from one to four device screens at a time.

T1V Support

T1V Support is available for phone and email support 8am – 10pm EST seven days a week (additional support is available after hours, per request).

Additionally, T1V Support provides 24/7 remote monitoring of all products, offering a proactive response program should any issues arise.

T1V Support is proud to offer a one-hour call back time. If a request is made outside of regular business hours, you will be contacted by 9am the following day.

All Support requests are handled on a priority basis (emergency vs. non-emergency). An emergency is defined as a problem that immediately affects the operation of the T1V product (i.e., a system crash, or touchscreens are not working). All other requests, such as general questions, should be made during regular business hours.

Please note: T1V Support is available to help with any issues specifically related to T1V products. T1V Support is not intended to be a training session. If additional training is required, please contact your T1V administrator (the designated point person within your organization). T1V Support does not offer support for any third party applications, such as MS Office, Windows, Internet Explorer, Mac OS, and any other programs or operating systems.

Additional T1V Hub Resources

Websites

t1v.com/ThinkHub
t1v.com/T1V Hub
t1v.com/AirConnect

ThinkHub Demo Videos

Visit t1v.com/ThinkHub-Videos to view T1V's ThinkHub Playlist on YouTube

Setup

Visit t1v.com/ThinkHub-Setup for additional support materials



Contact

support@t1v.com
855.THINKHUB